

BIXOLON®

Windows Driver Manual
SRP-350plusII

Thermal printer
Rev. 1.02



<http://www.bixolon.com>

■ Table of Contents

1. About this Manual	3
2. OS Environment	3
3. Windows Driver Preparation	3
4. Windows Driver Installation	4
4-1 Installing on Windows XP / Server 2003	4
4-1-1 Via Serial Port or Bluetooth	4
4-1-2 Via Parallel Port	7
4-1-3 Via USB Port	9
4-1-4 Via Ethernet / Wireless LAN Port	11
4-2 Installing on Windows VISTA / Server 2008 / 7 / 8 / Server 2012	14
4-2-1 Via Serial or Bluetooth	14
4-2-2 Via Parallel Port	17
4-2-3 Via USB Port	19
4-2-4 Via Ethernet / Wireless LAN Port	21
5. Detailed settings of Windows driver	24
5-1 Layout	24
5-1-1 Number of Prints	24
5-1-2 Paper Type	24
5-1-3 Paper Size	25
5-1-4 Image Rotation	26
5-1-5 Paper Reduction	26
5-1-6 Crop Function	26
5-2 Dithering	27
5-3 NV Image/Commands	28
5-4 Barcodes	29
5-4-1 1d Barcodes	30
5-4-2 2d Barcodes	31
5-5 Cut / Cash Drawer	32
5-6 Utility	33
5-6-1 Unified POS Utility	33
5-6-2 Special Font Edit Utility	34
5-6-3 Journal Viewer	35
5-6-4 Text-Key Function	36
5-7 Bidirectional Communication	39
6. Windows Driver Specifications	40
6-1 Fonts	40
6-1-1 Standard Fonts	40
6-1-2 Meaning of names of Device fonts.	41
6-2 "FontControl" Font	42
7. Windows Driver Application	44
7-1 Application with Visual Basic	44
7-1-1 Windows driver selection	44
7-1-2 Text Printing	44
7-1-3 Barcode Printing	45
7-2 Application with WordPad	46
7-2-1 WordPad environment setting	46
7-2-2 Text Printing	46

1. About this Manual

This Windows Driver Installation Manual provides information on installation, detailed specifications, and usage of the printer's Windows Driver according to PC operating system (OS).

We at BIXOLON maintain ongoing efforts to enhance and upgrade the functions and quality of all our products. In following, product specifications and/or user manual content may be changed without prior notice.

2. OS Environment

The following operating systems are supported by this Windows driver.

- Microsoft Windows XP (32bit/64bit)
- Microsoft Windows Server 2003 (32bit/64bit)
- Microsoft Windows Vista (32bit/64bit)
- Microsoft Windows Server 2008 (32bit/64bit)
- Microsoft Windows Server 2008R2 (64bit)
- Microsoft Windows 7 (32bit/64bit)
- Microsoft Windows 8 (32bit/64bit)
- Microsoft Windows Server 2012 (64bit)

3. Windows Driver Preparation

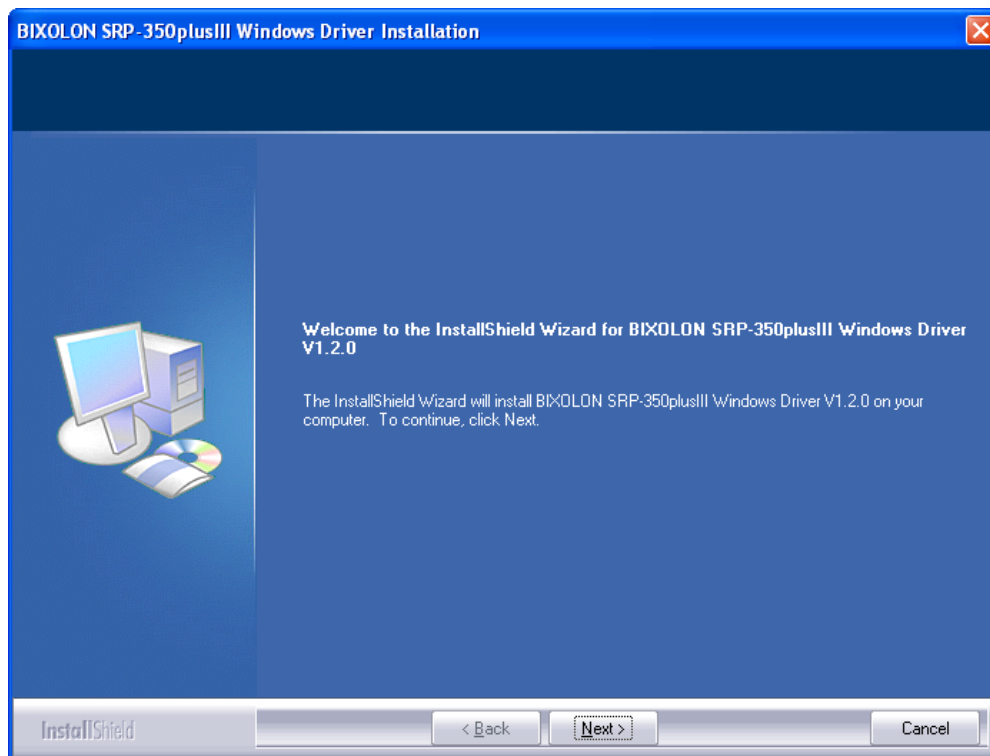
The Windows Driver is included in the enclosed CD, and Latest file versions can be downloaded from the Bixolon website. (www.bixolon.com)

4. Windows Driver Installation

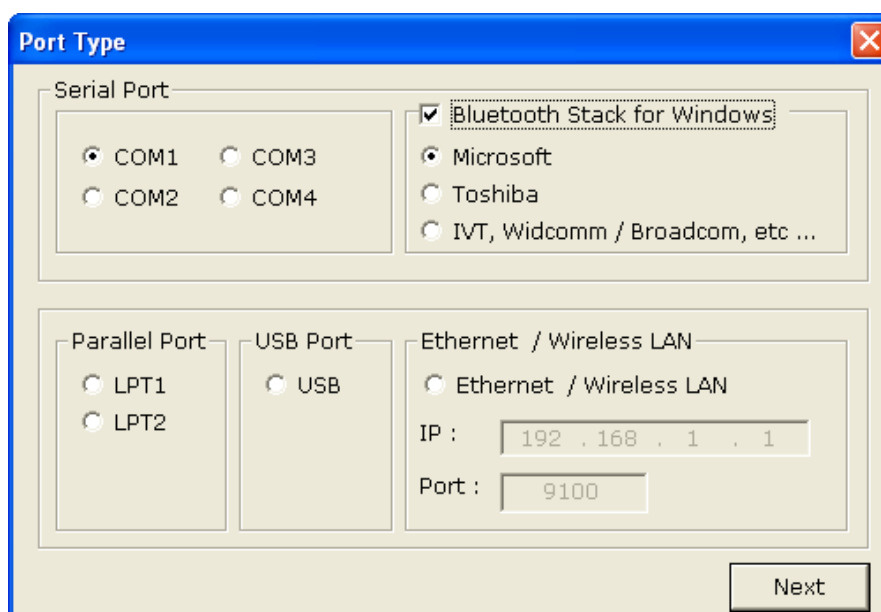
4-1 Installing on Windows XP / Server 2003

4-1-1 Via Serial Port or Bluetooth

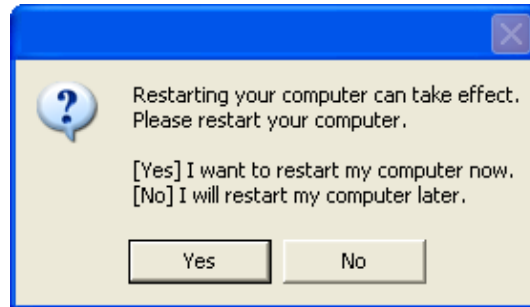
- 1) Double-click the Windows Driver installation file.
- 2) Click **Next**.



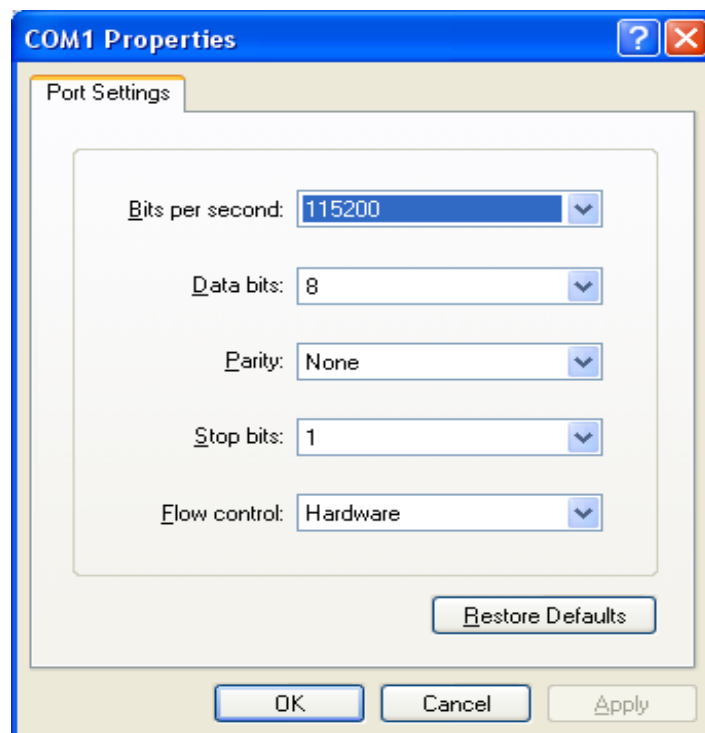
- 3) Select a COM port to be used and then click **Next**.



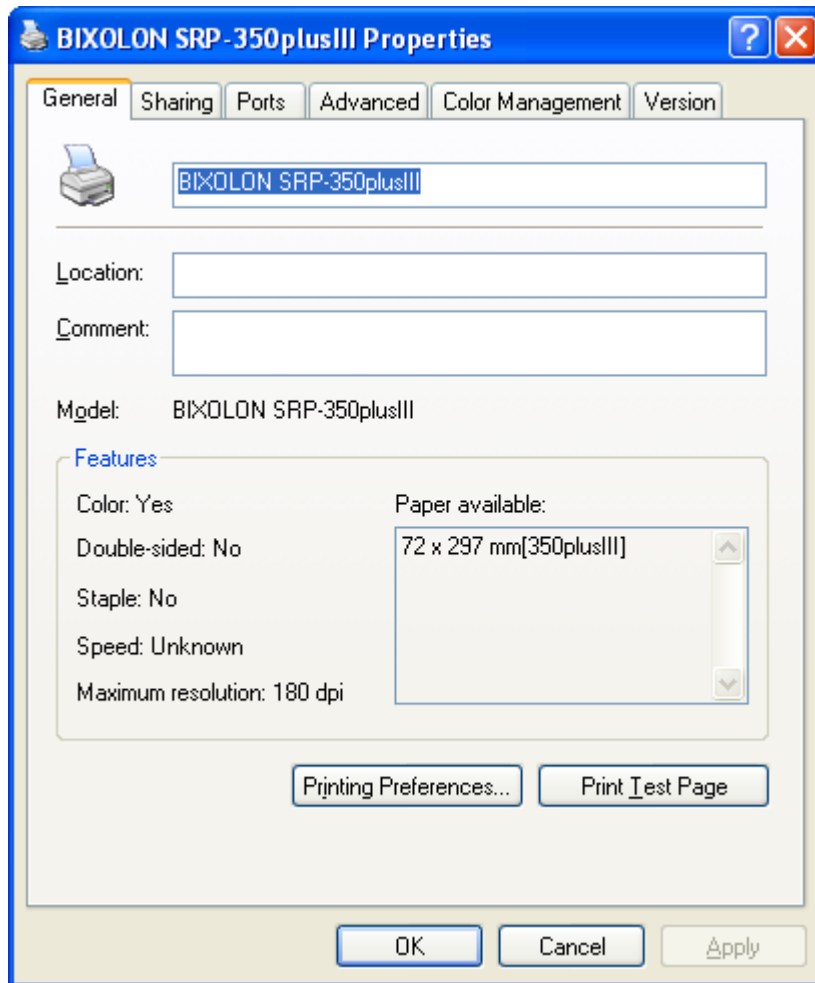
- 4) If you are using a Bluetooth Serial port, click **Bluetooth Stack for Windows** and then select a Bluetooth driver vendor.
 - ✧ Skip this step if the printer is connected with a serial cable.
- 5) Click **Next** to install Windows driver.
- 6) Click **Yes** to reboot the PC.



- 7) Open the printer properties window in the Windows OS.
 - ✧ Control Panel – Printers and Faxes.
- 8) In the **Ports** tab, click **Configure Port**.
 - ✧ Skip this step if you are using a Bluetooth Serial port.
- 9) Match the communication settings to those of the printer. The communication settings of the printer can be performed by conducting a self-test.
 - ✧ Skip this step if you are using a Bluetooth Serial port.

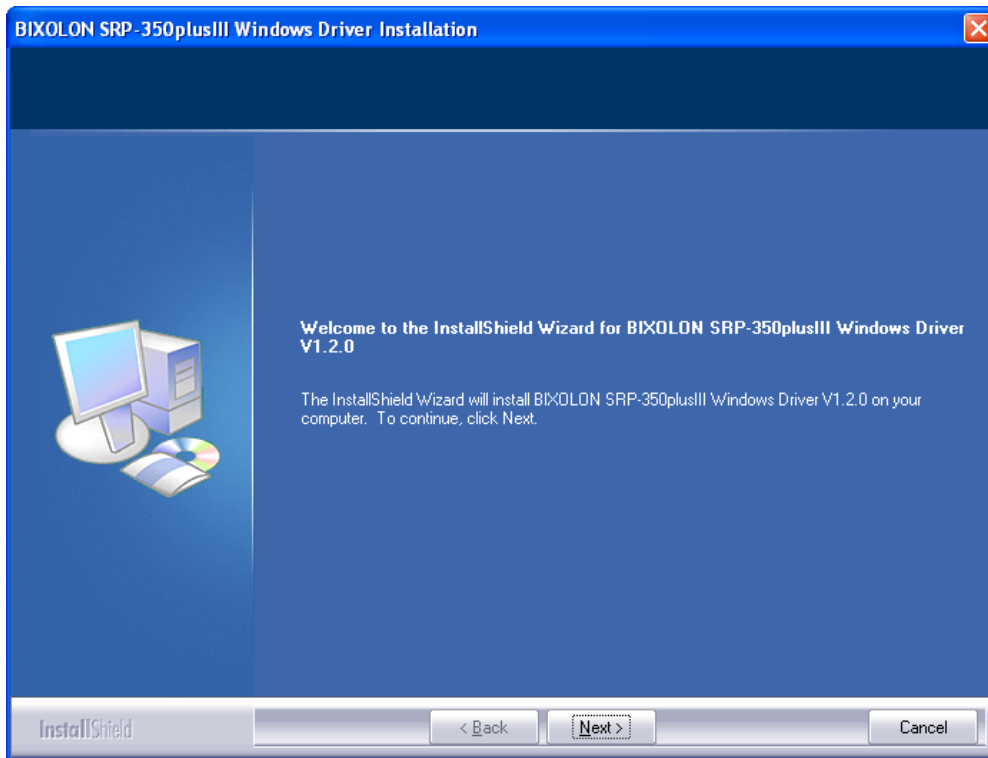


10) Click **Print Test Page** and check printing status. Proper installation of the driver is indicated if the test page is printed normally.

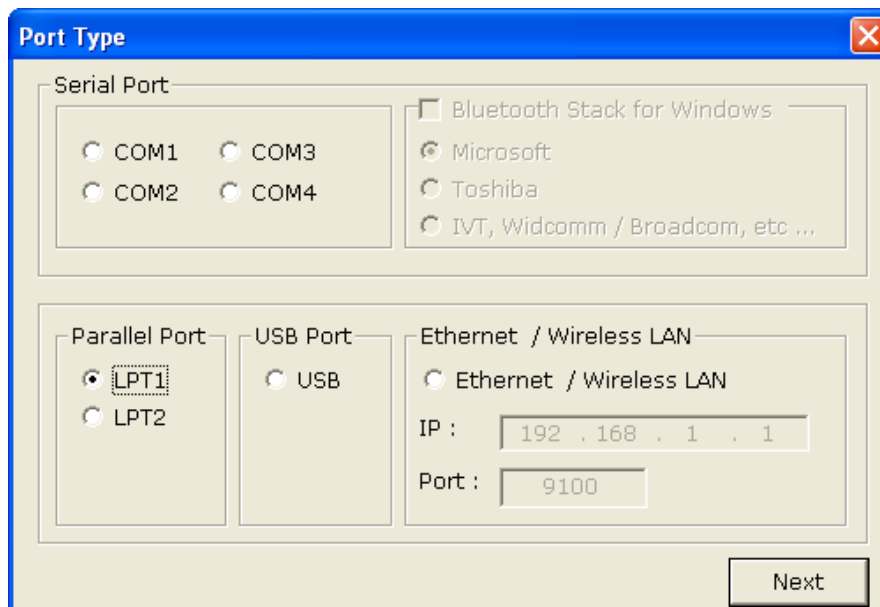


4-1-2 Via Parallel Port

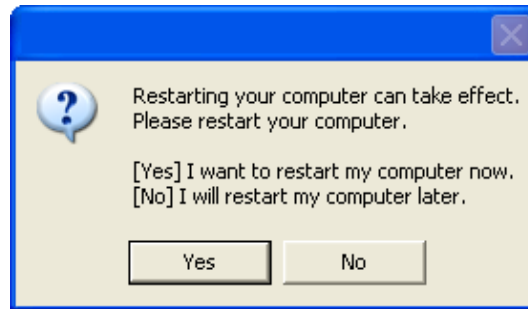
- 1) Double-click the Windows Driver installation file.
- 2) Click **Next**.



- 3) Select a LPT port to be used, and then click **Next**.



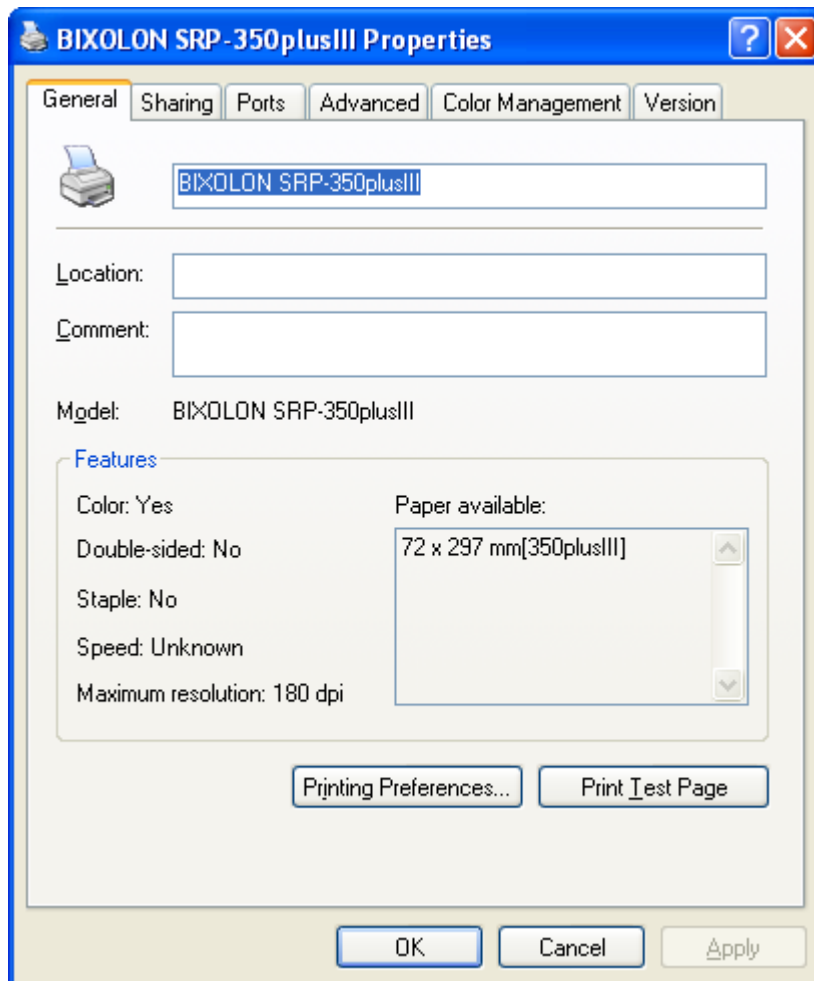
4) Click **Yes** to reboot the PC.



5) Open the printer properties window in the Windows OS.

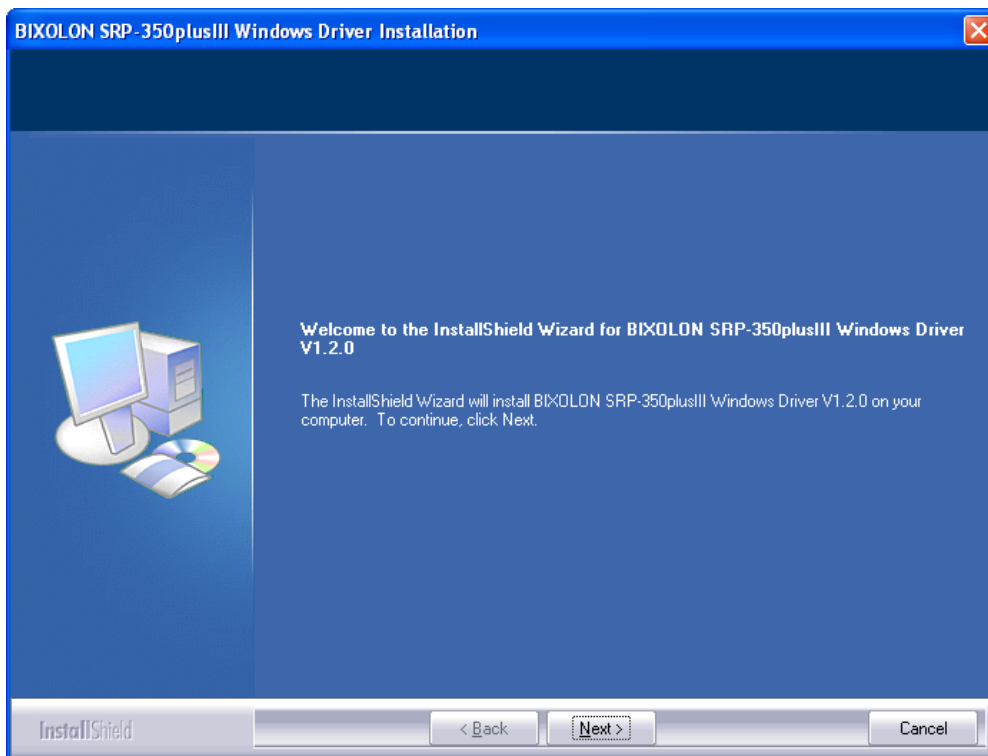
※ Control Panel – Printers and Faxes.

6) Click **Print Test Page** and check printing status. Proper installation of the driver is indicated if the test page is printed normally.

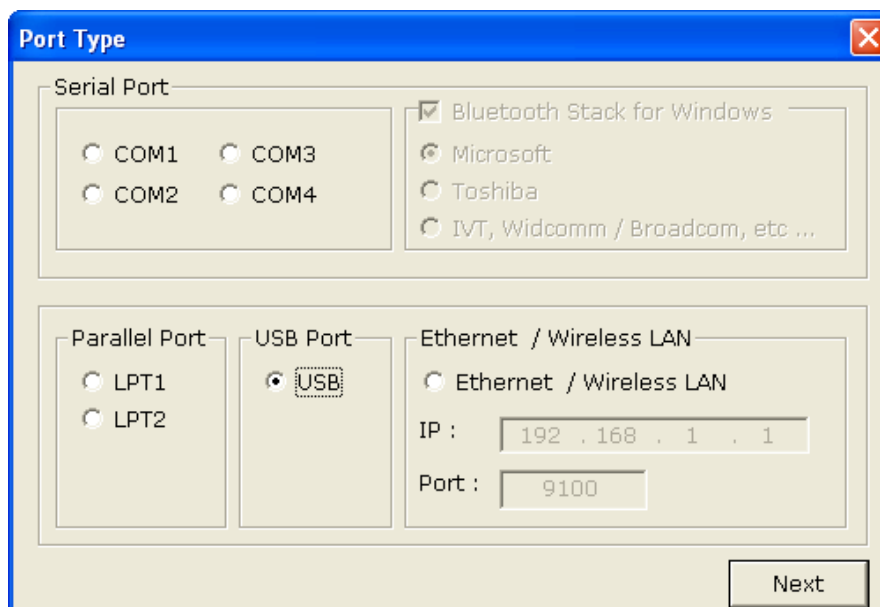


4-1-3 Via USB Port

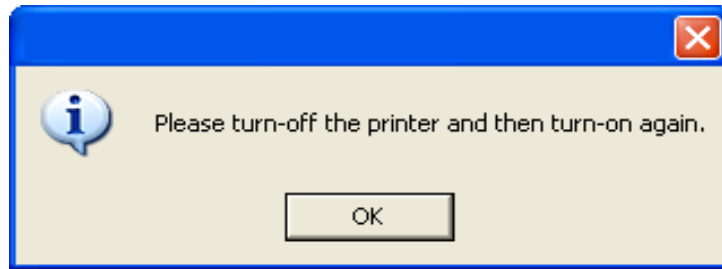
- 1) Double-click the Windows Driver installation file.
- 2) Click **Next**.



- 3) Select **USB** and then click **Next**.



4) Click **OK**.

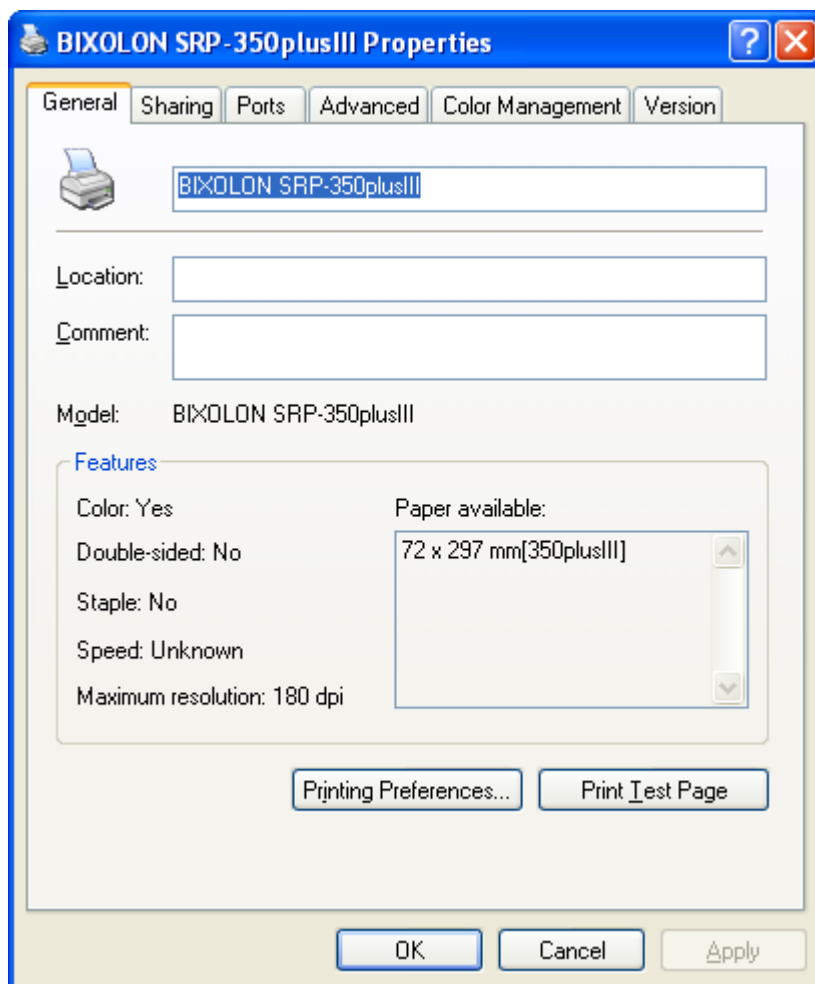


5) Turn off the printer and then turn it on. The printer driver will be installed automatically.

6) Open the printer properties window in the Windows OS.

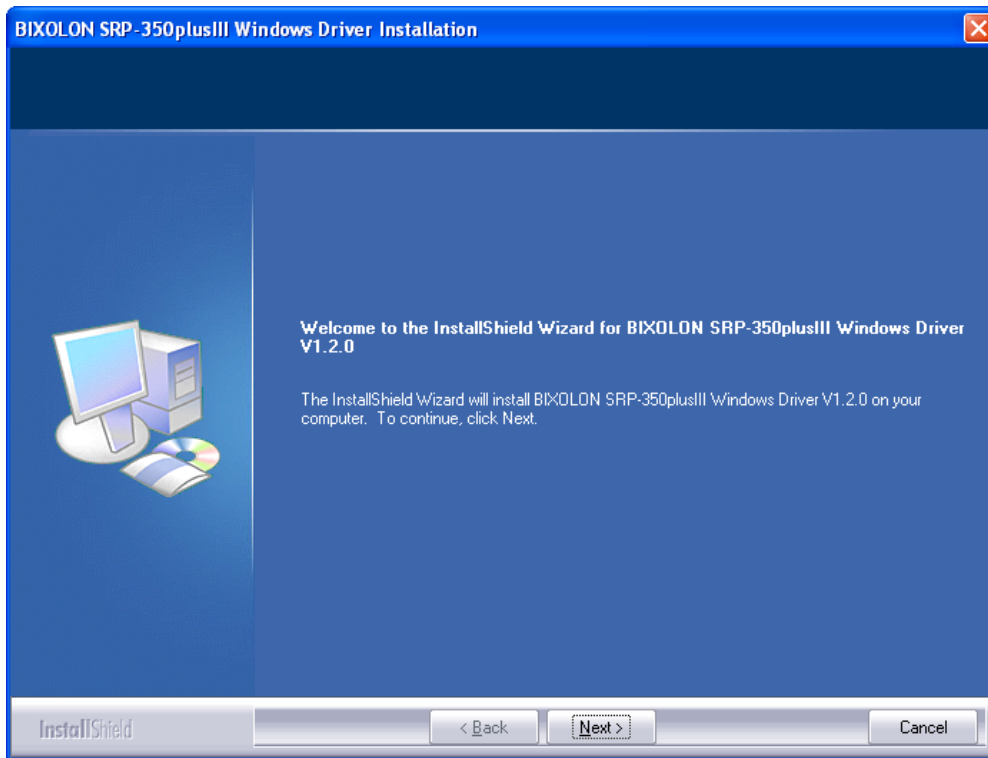
※ Control Panel – Printers and Faxes.

7) Click **Print Test Page** and check printing status. Proper installation of the driver is indicated if the test page is printed normally.

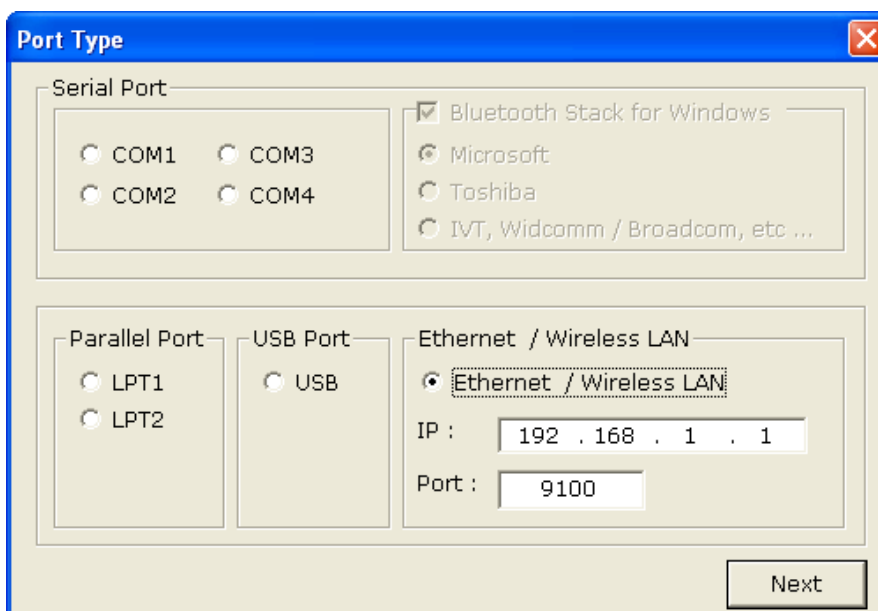


4-1-4 Via Ethernet / Wireless LAN Port

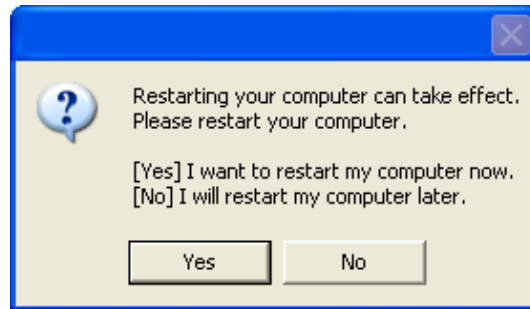
- 1) Double-click the Windows Driver installation file.
- 2) Click **Next**.



- 3) Select **Ethernet / Wireless LAN**.
- 4) Enter the IP address and port number, and then click **Next**.



5) Click **Yes** to reboot the PC.

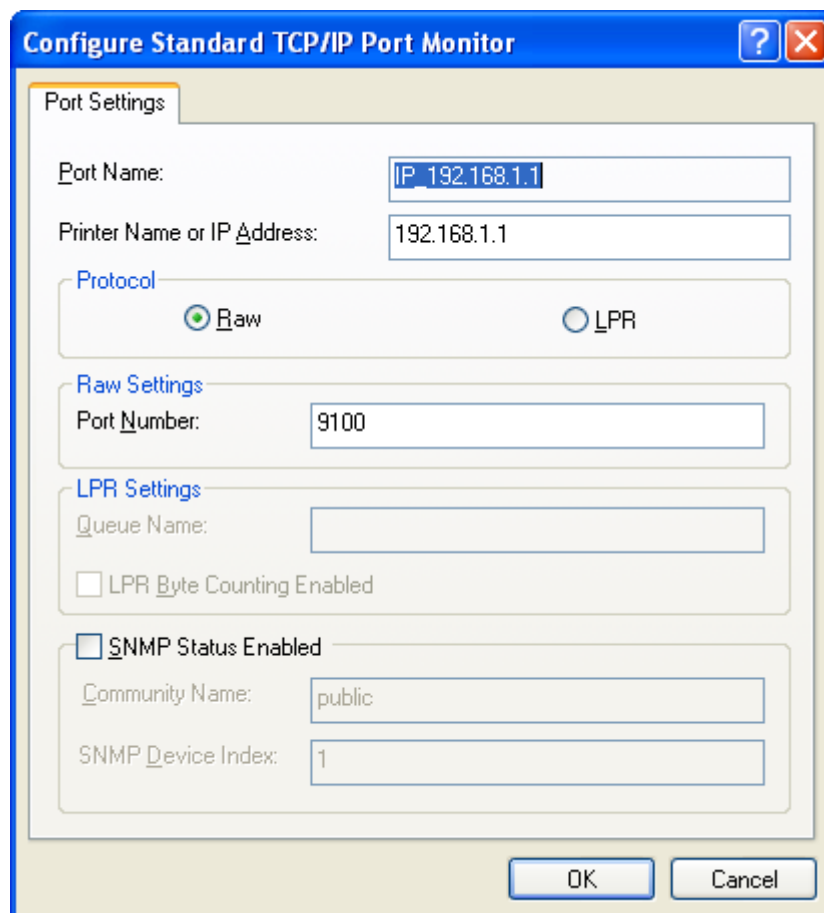


6) Open the printer properties window in the Windows OS.

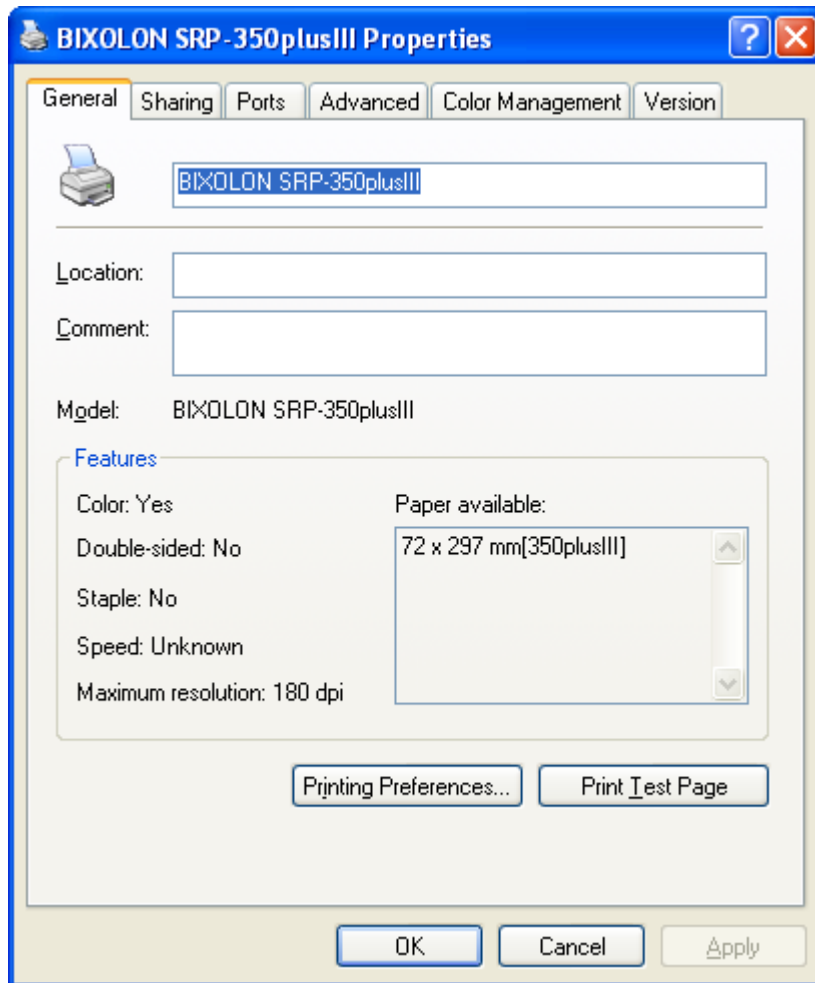
※ Control Panel – Printers and Faxes.

7) In the **Ports** tab, click **Configure Port....**

8) Match the communication settings to those of the printer.



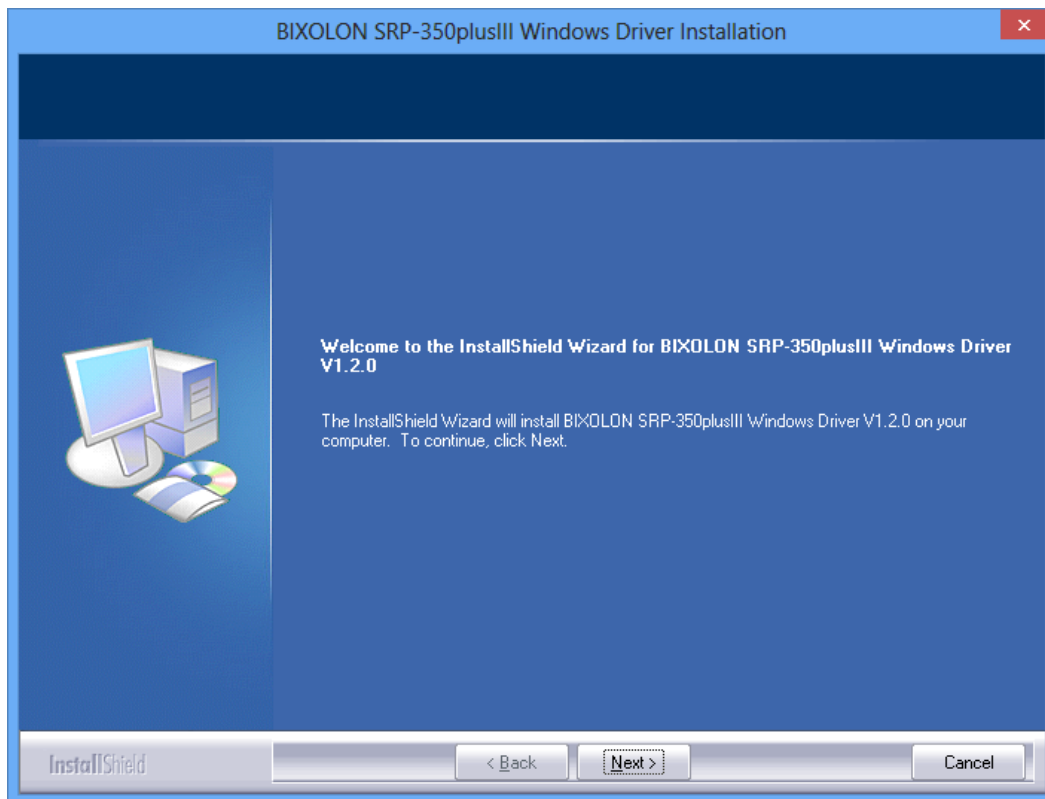
- 9) Click **Print Test Page** and check printing status. Proper installation of the driver is indicated if the test page is printed normally.



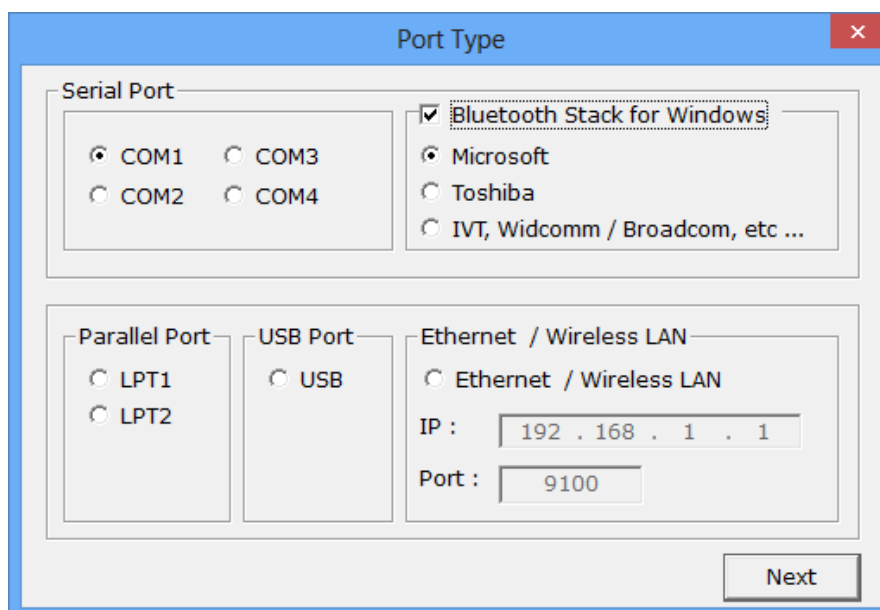
4-2 Installing on Windows VISTA / Server 2008 / 7 / 8 / Server 2012

4-2-1 Via Serial or Bluetooth

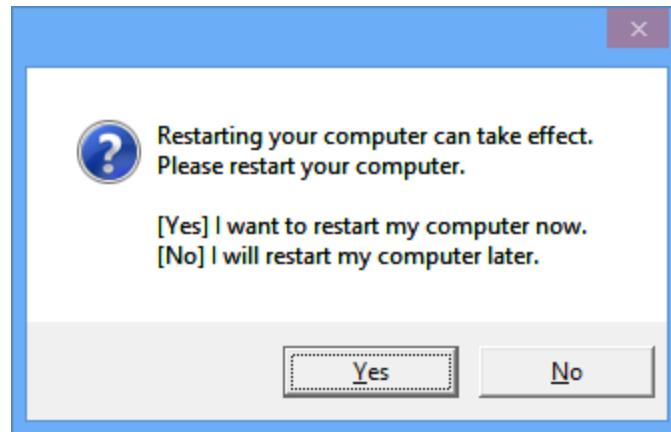
- 1) Double-click the Windows Driver installation file.
- 2) Click **Next**.



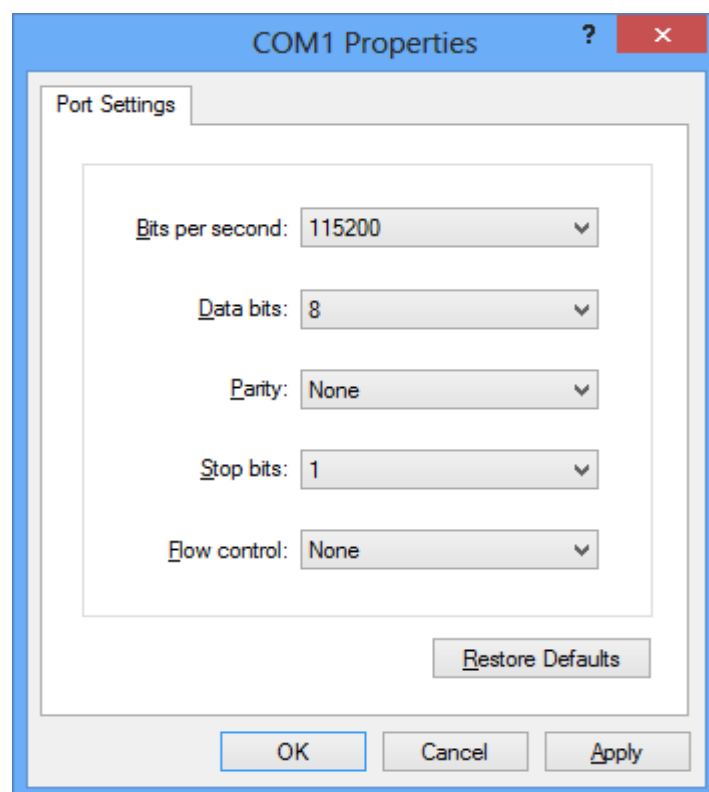
- 3) Select a COM port to be used and then click **Next**.



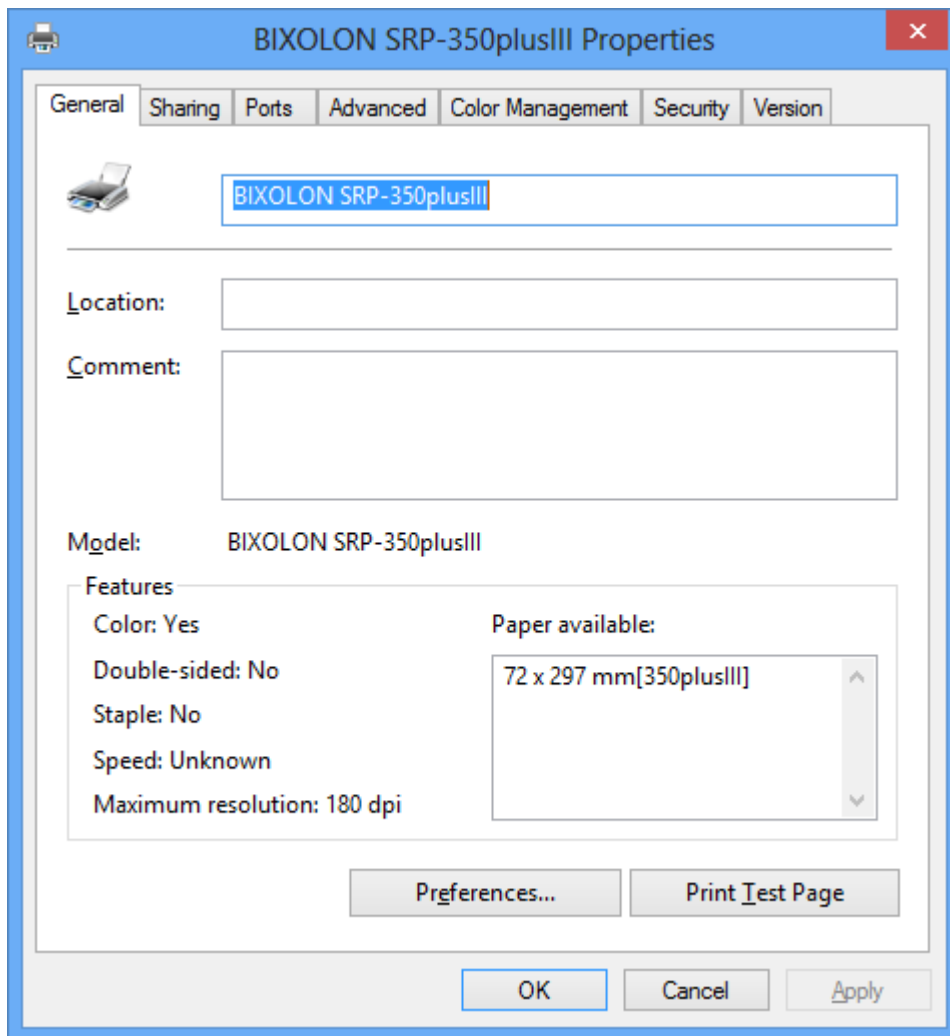
- 4) If you are using a Bluetooth Serial port, click **Bluetooth Stack for Windows** and then select a Bluetooth driver vendor.
 - ※ Skip this step if the printer is connected with a serial cable.
- 5) Click **Next** to install Windows driver.
- 6) Click **Yes** to reboot the PC.



- 7) Open the printer properties window in the Windows OS.
 - ※ Control Panel – Hardware and Sound – Device and Printers.
- 8) In the **Ports** tab, click **Configure Port**.
 - ※ Skip this step if you are using a Bluetooth Serial port.
- 9) Match the communication settings to those of the printer. The communication settings of the printer can be performed by conducting a self-test.
 - ※ Pass this step if you are using a Bluetooth Serial port.

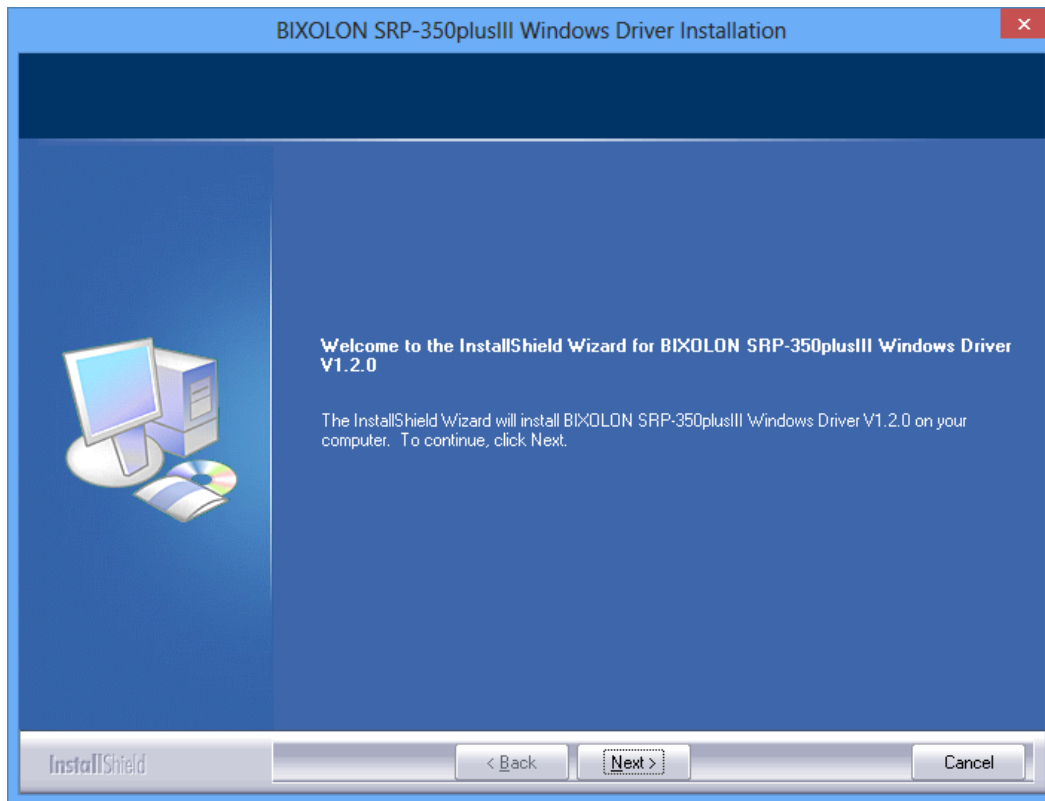


10) Click **Print Test Page** and check printing status. Proper installation of the driver is indicated if the test page is printed normally.

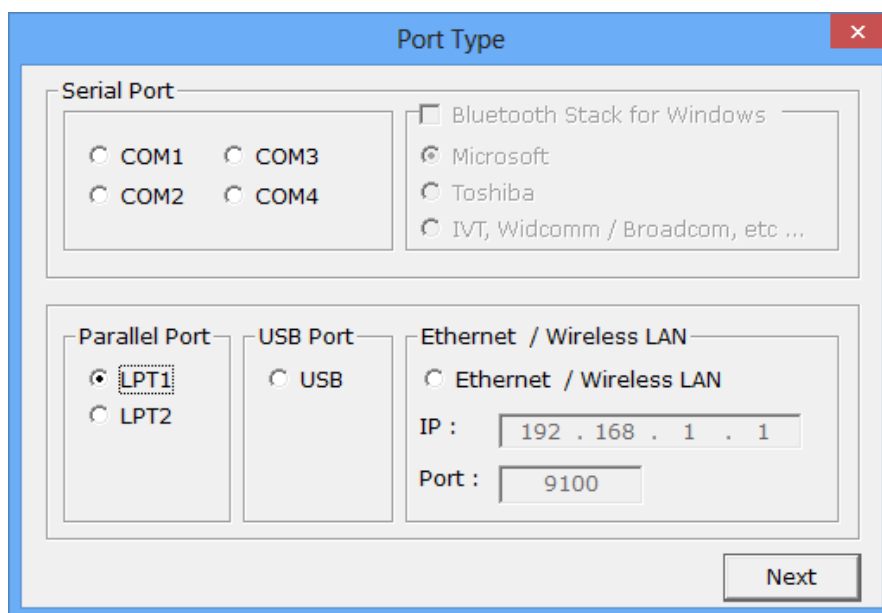


4-2-2 Via Parallel Port

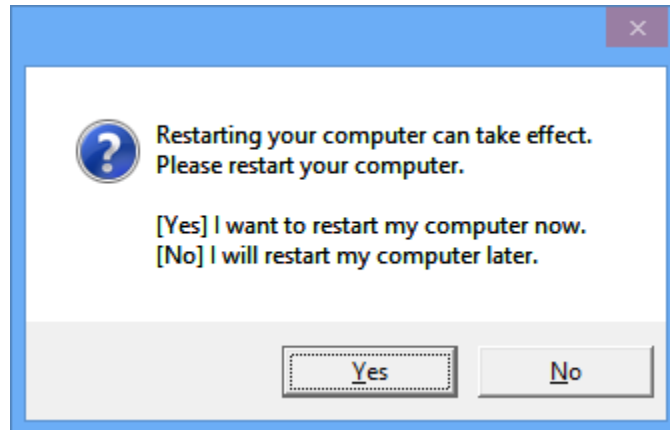
- 1) Double-click the Windows Driver installation file.
- 2) Click **Next**.



- 3) Select a LPT port number to be used and click **Next**.



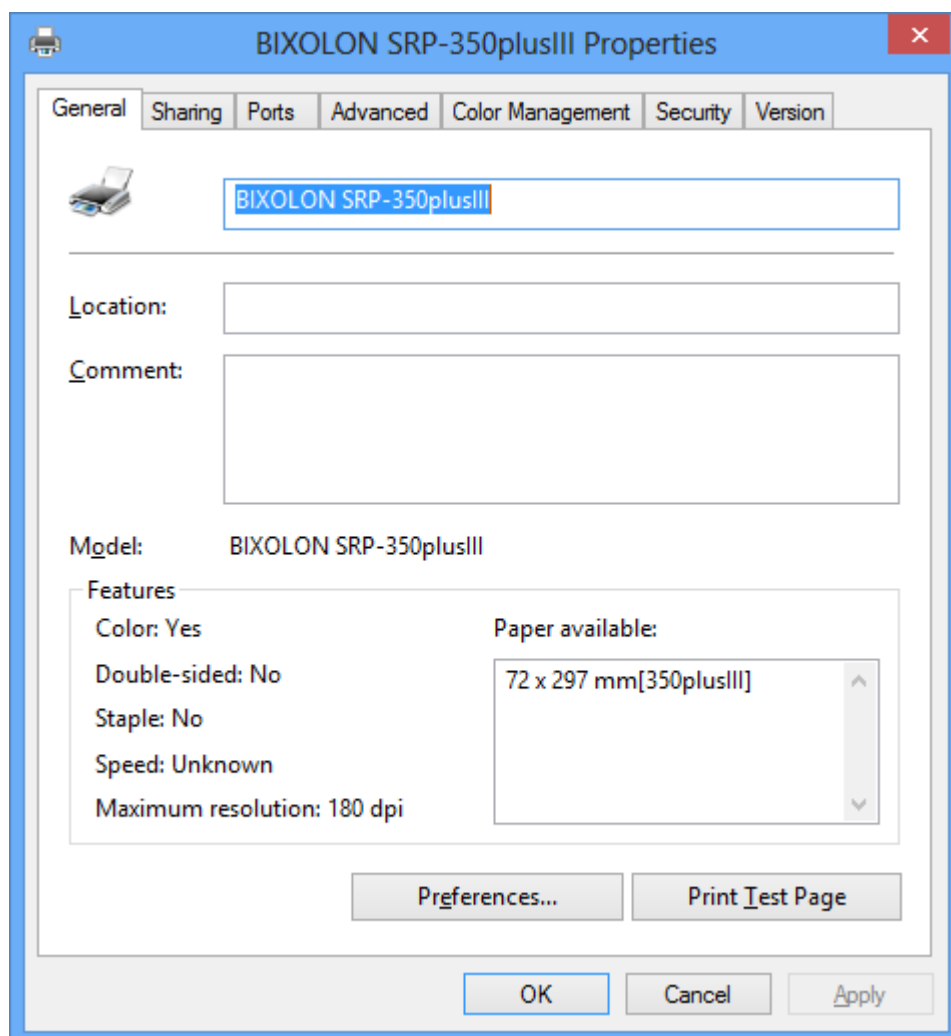
4) Click **Yes** to reboot the PC.



5) Open the printer properties window in the Windows OS.

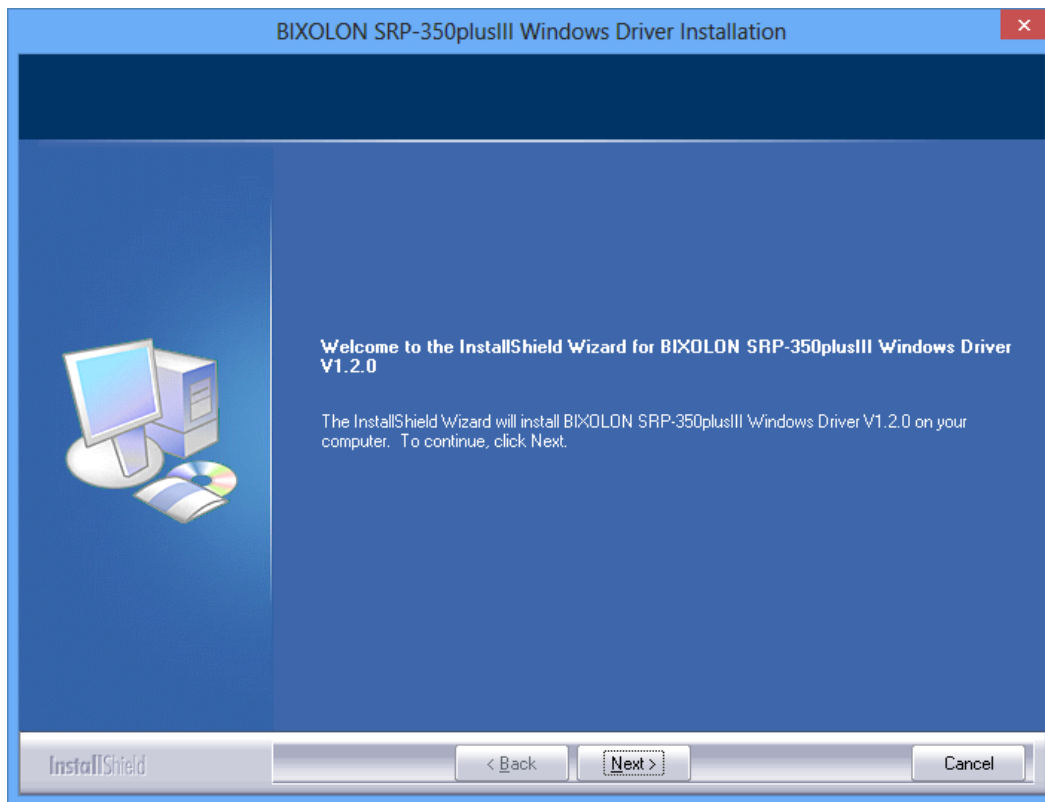
※ Control Panel – Hardware and Sound – Device and Printers.

6) Click **Print Test Page** and check printing status. Proper installation of the driver is indicated if the test page is printed normally.

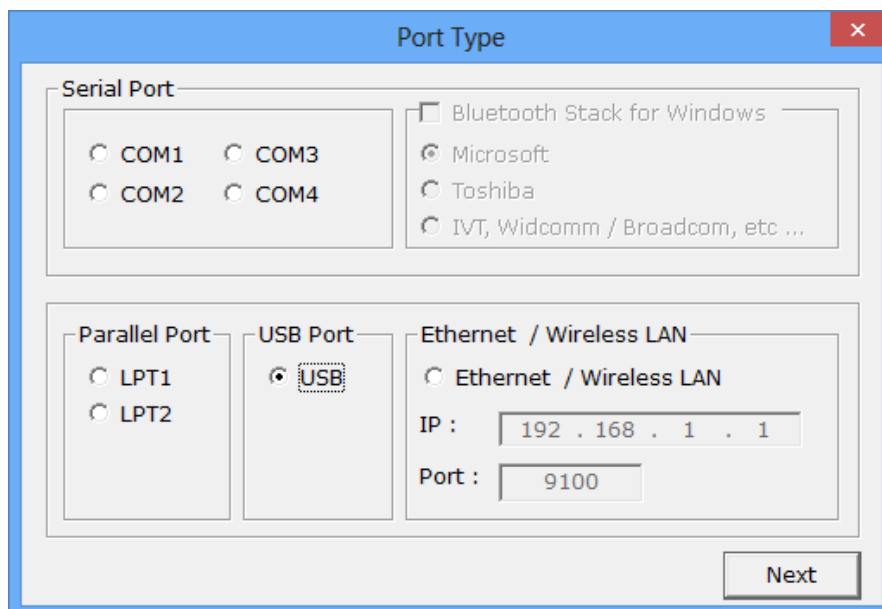


4-2-3 Via USB Port

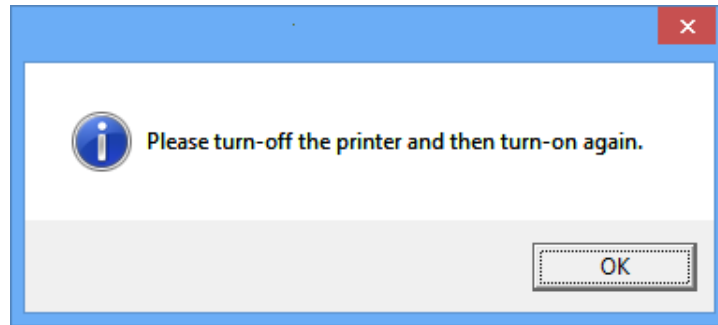
- 1) Double-click the Windows Driver installation file.
- 2) Click **Next**.



- 3) Select **USB** and then click **Next**.



4) Click **OK**.

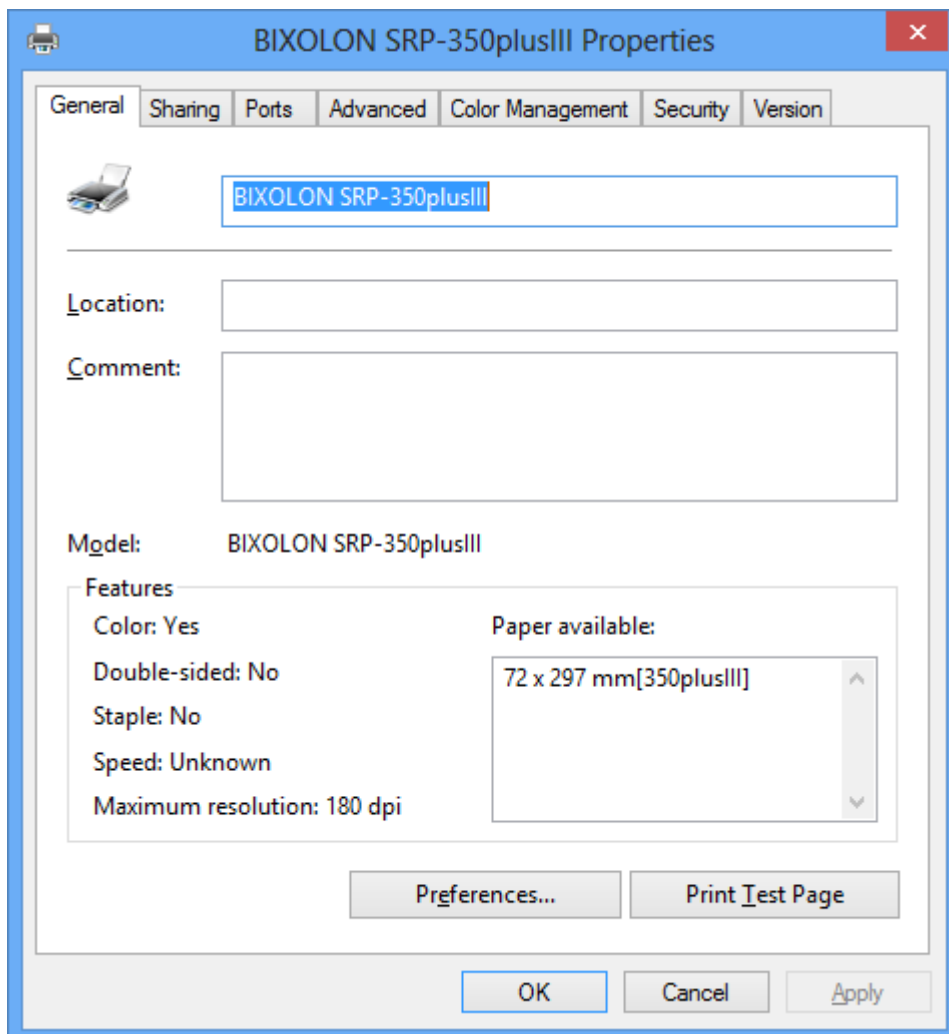


5) Turn off the printer and then turn it on again. The printer driver will be installed automatically.

6) Open the printer properties window in the Windows OS.

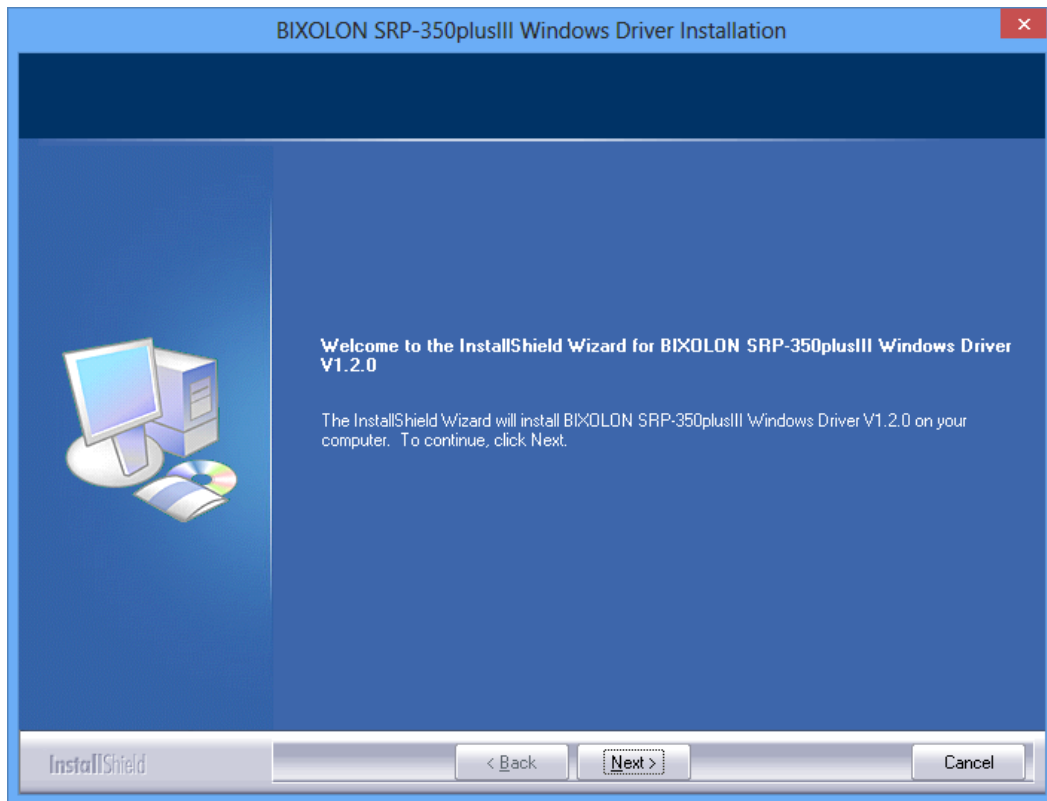
※ Control Panel – Hardware and Sound – Device and Printers.

7) Click **Print Test Page** and check printing status. Proper installation of the driver is indicated if the test page is printed normally.

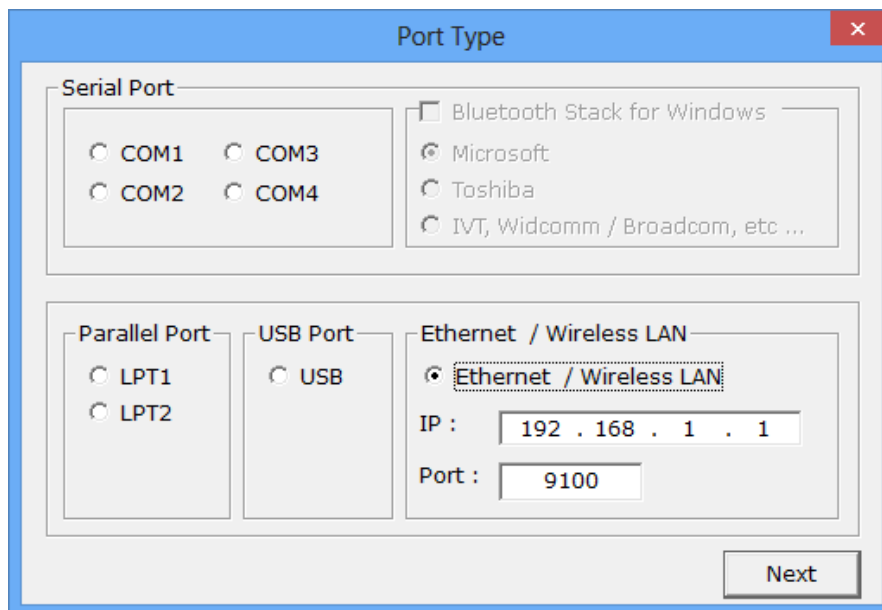


4-2-4 Via Ethernet / Wireless LAN Port

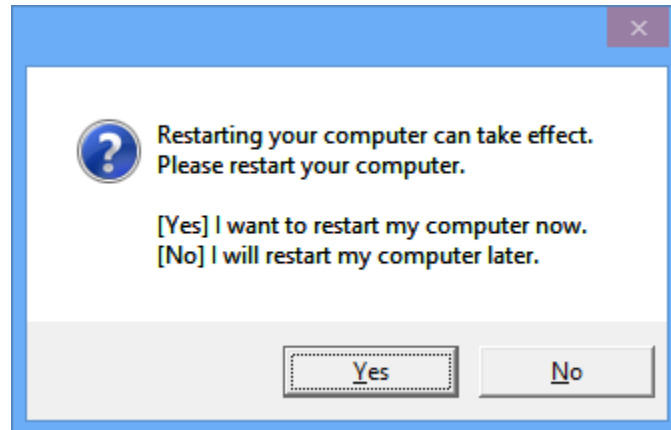
- 1) Double-click the Windows Driver installation file.
- 2) Click **Next**.



- 3) Select **Ethernet / Wireless LAN**.
- 4) Enter the IP address and port number, and then click **Next**.



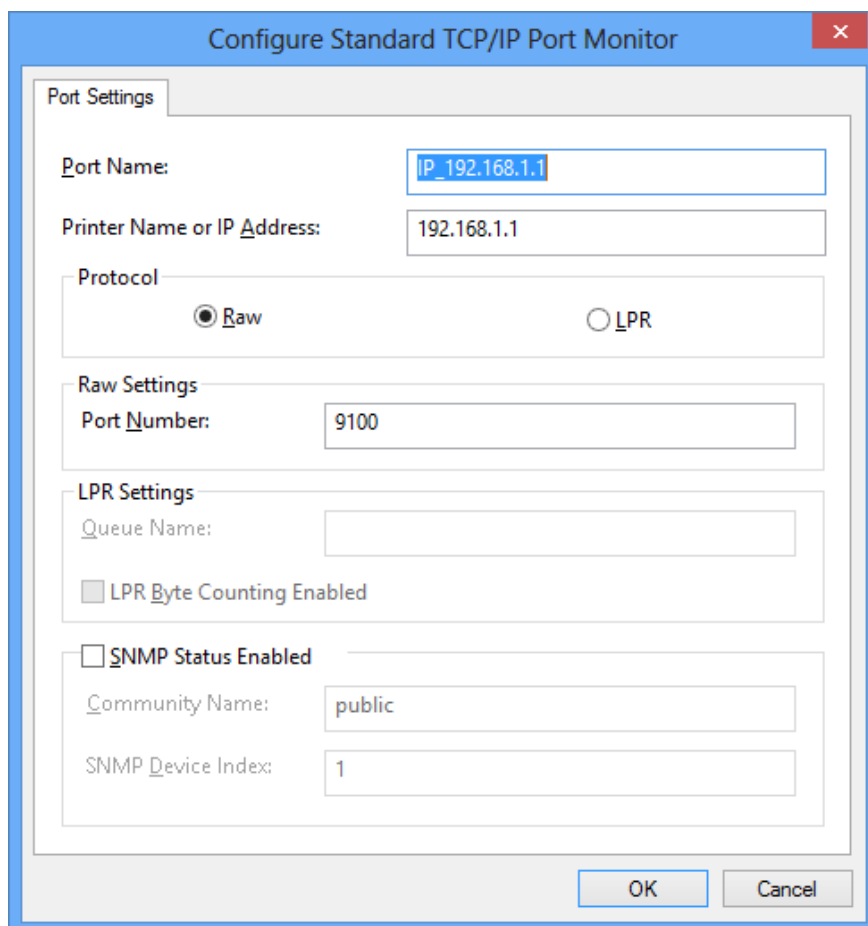
5) Click **Yes** to reboot the PC.



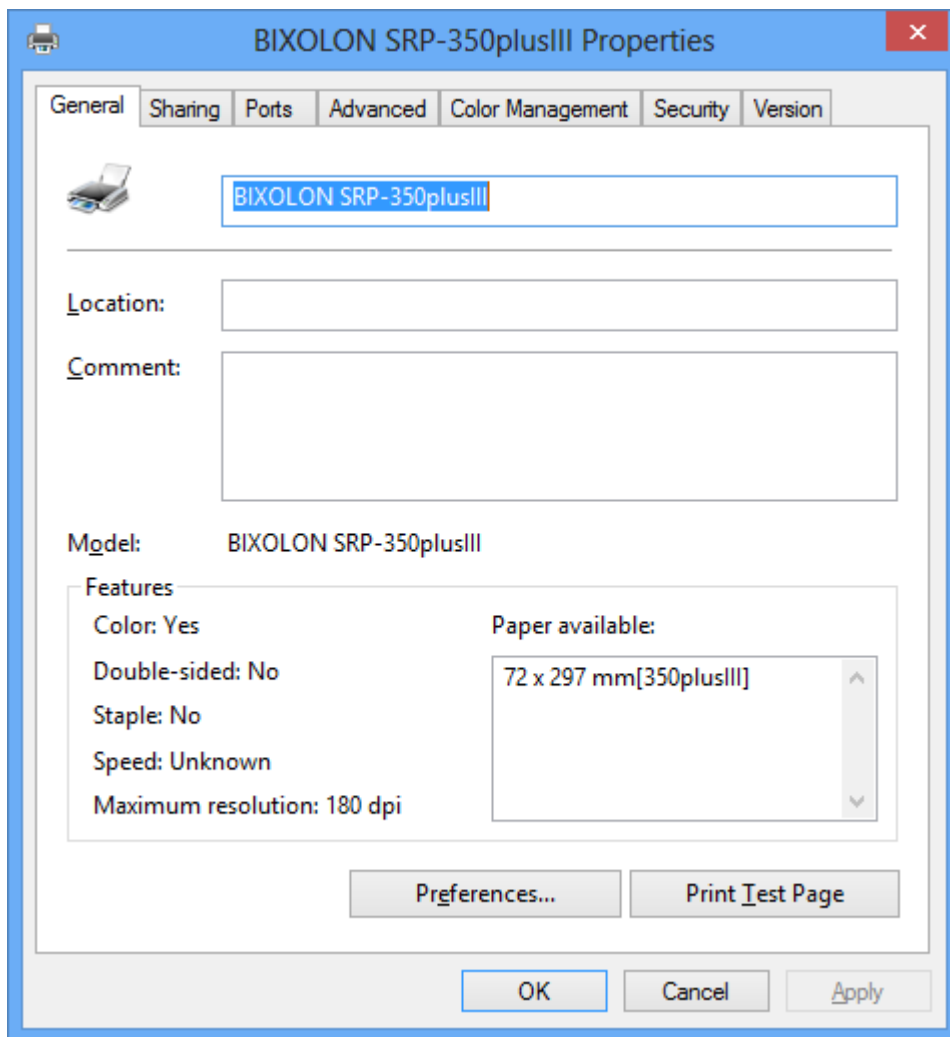
6) Open the printer properties window in the Windows OS.
※ Control Panel – Hardware and Sound – Device and Printers.

7) In the **Ports** tab, click **Configure Port....**

8) Match the communication settings to those of the printer.



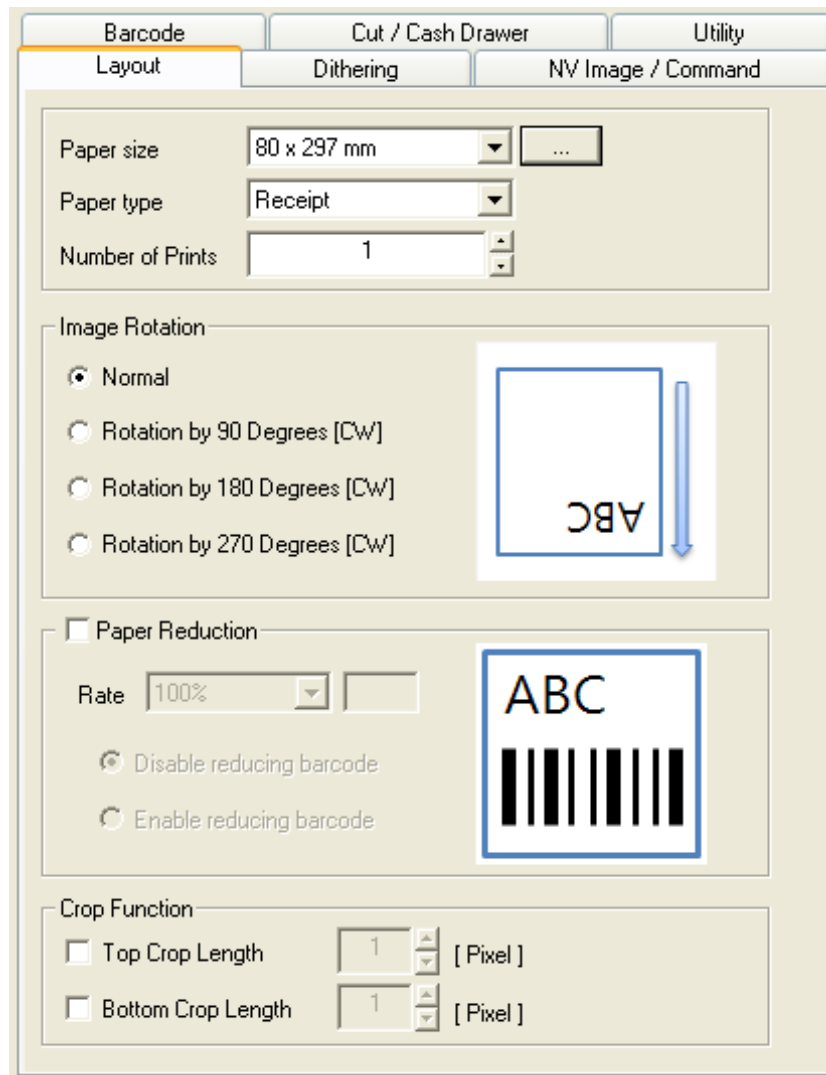
- 9) Click **Print Test Page** and check printing status. Proper installation of the driver is indicated if the test page is printed normally.



5. Detailed settings of Windows driver

The following detailed functions can be configured after installing the Windows driver.

5-1 Layout



- 1) Open the Printer Properties window for the corresponding OS.
- 2) In the **General** tab, click **Preferences**.
- 3) Click the **Layout** tab.

5-1-1 Number of Prints

The Number of Prints is set to 1 by default. Set this value bigger than 1 to set the number of copies to print. The value should be within the range of 1 to 100.

5-1-2 Paper Type

You can choose Receipt or Ticket as paper types. Receipt allows flexible paper length according to the data length. Ticket print in fixed length even the print data is short. Default setting is "Receipt".

- Receipt : Receipt allows flexible paper length according to the data length.
- Ticket : Ticket print in fixed length even the print data is short.

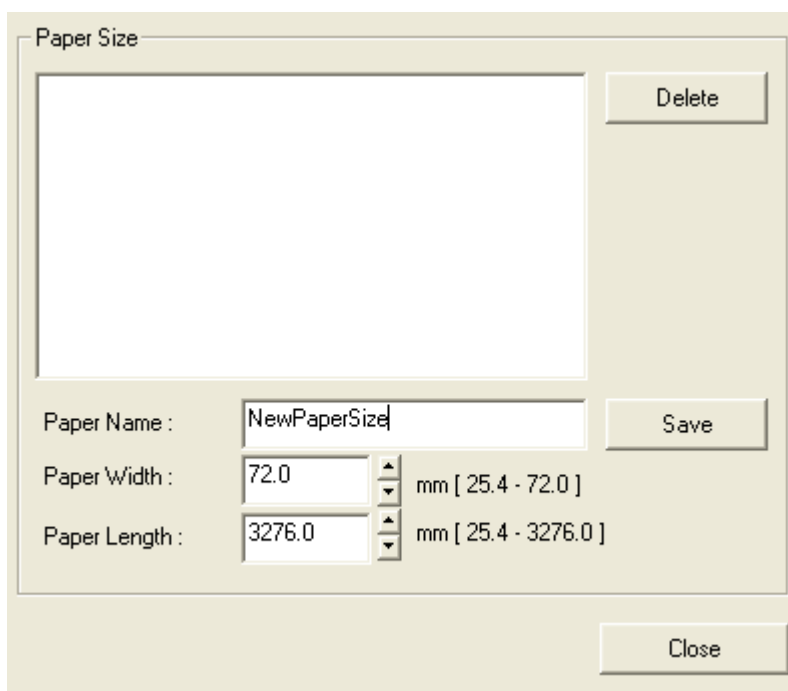
5-1-3 Paper Size

Paper size of 72 x 297 mm is selected by default, and the following sizes can be selected.

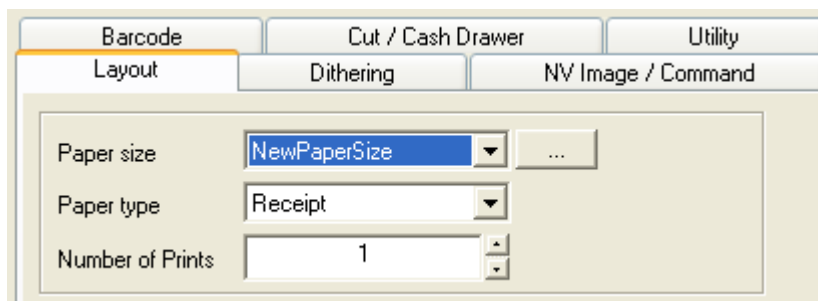
72 × 40 mm	72 × 160 mm	72 × 3276 mm
72 × 80 mm	72 × 200 mm	
72 × 120 mm	72 × 297 mm	

If a custom paper size is required, click the “...” button to add or update a custom paper size and then, click the “Save” button after specifying the paper width/length and a paper name. If the specified paper name already exists on the system, you can update the paper width/length.

- Valid Paper Width : 25.4 mm ~ 72 mm
- Valid Paper Length : 25.4 mm ~ 3276 mm



You can choose the new paper size on the “Paper Size” combo-box after adding a paper size.



5-1-4 Image Rotation

The image can be rotated 90°, 180°, and 270° in a clockwise direction for printing. When the rotation function is used for printing, device font is converted to True Type Font.

5-1-5 Paper Reduction

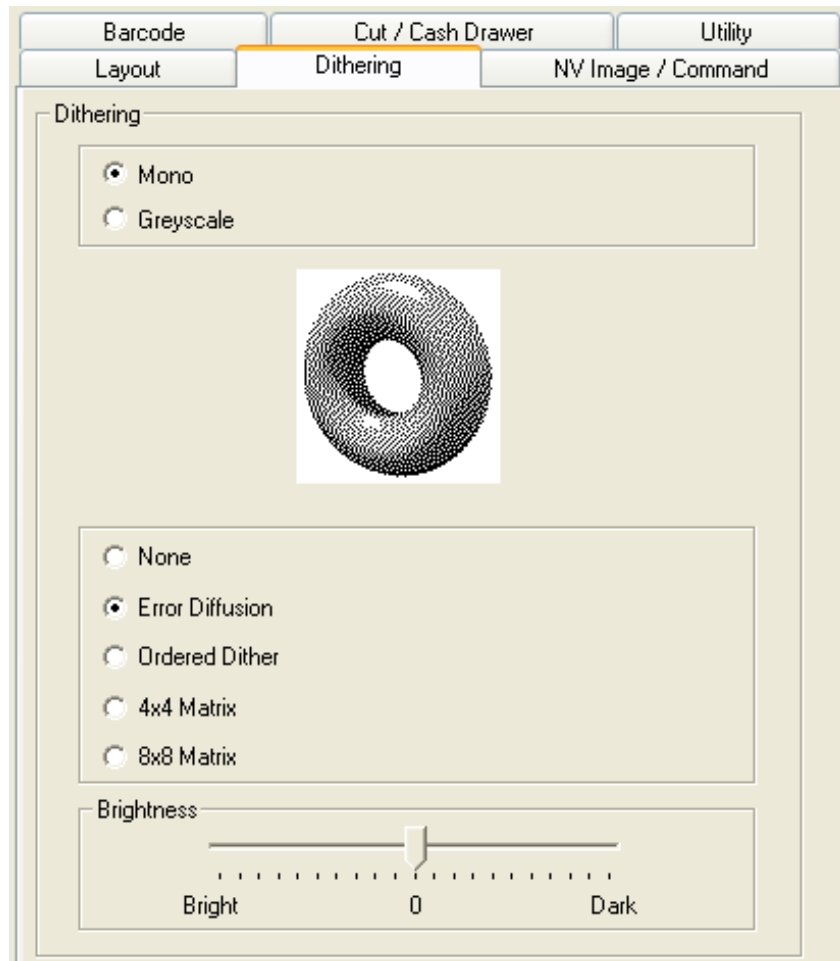
This function reduces the print image size down to 25% to save print paper. When the reduction function is used, device font is converted to True Type font for printing.

If the barcode font also needs to be reduced, select the Enable reducing barcode button. Select Disable reducing barcode button if it is not required.

5-1-6 Crop Function

This function crops the upper and lower end of the printing area by the specified number of pixels. It helps reduce the margin at the top and bottom when there is excessive margin. The value should be within the range of 1 to 255 [pixel].

5-2 Dithering



- 1) Open the Printer Properties window for the corresponding OS.
- 2) In the **General** tab, click **Preferences**.
- 3) Click the **Dithering** tab.

This printer model is a black and white printing device including dithering function, graphic processing, grayscale print function, and brightness level adjust function to produce a sharper or softer image. The following dithering algorithm option is available when Monochrome option is selected.

- None
- Error Diffusion
- Ordered Dither
- 4x4 Matrix
- 8x8 Matrix

Dithering algorithm is not available if Greyscale is selected, and print speed may become slower because the amount of data to send to the printer becomes larger.

5-3 NV Image/Commands

Barcode Cut / Cash Drawer Utility

Layout Dithering NV Image / Command

Text & Command [Example : <1B700019FF> or <1B>p<0019FF>]

Start Doc

NV Image Printing : Not Printed

Text & Command

Start Page

NV Image Printing : Not Printed

Text & Command

End Page

NV Image Printing : Not Printed

Text & Command

End Doc

NV Image Printing : Not Printed

Text & Command

NV Function Option

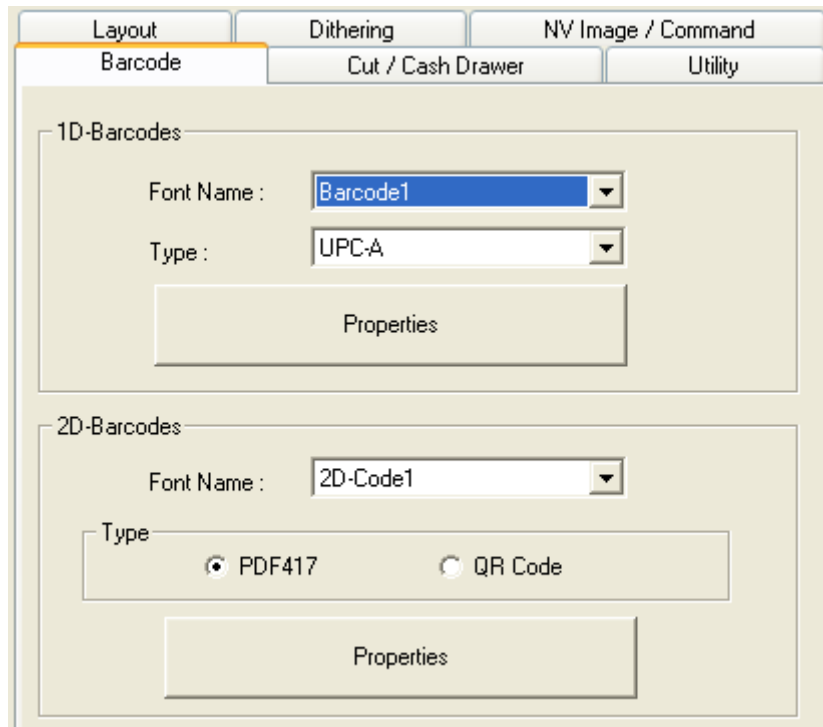
NV bit image NV graphics

- 1) Open the Printer Properties window for the corresponding OS.
- 2) In the **General** tab, click **Preferences**.
- 3) Click the **NV Image / Command**.

NV image downloaded and stored in the printer can be inserted at the beginning and/or end of the document and beginning and end of each page, or printer command can be inserted before sending printer data to the printer. NV image can be downloaded using the Unified POS Utility.

- Start Doc : Insert commands or NV image at the top of the document.
- Start Page : Insert commands or NV image at the top of the page.
- End Page : Insert commands or NV image at the end of the page.
- End Doc : Insert commands or NV image at the end of the document.

5-4 Barcodes



- 1) Open the Printer Properties window for the corresponding OS.
- 2) In the **General** tab, click **Preferences**.
- 3) Click the **Barcode**.

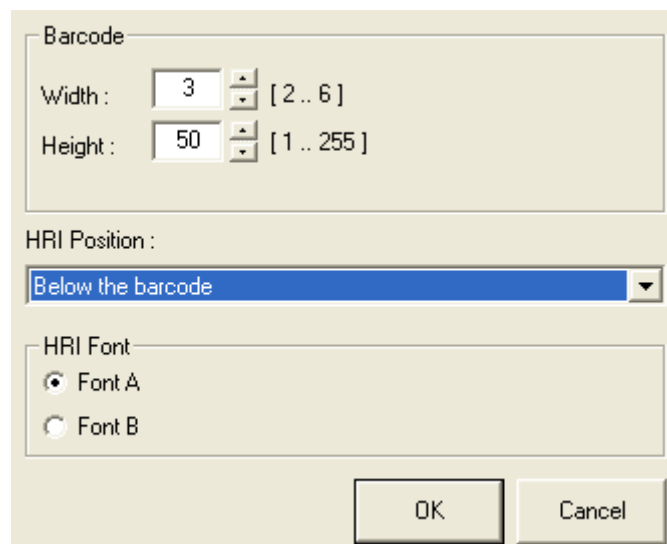
5-4-1 1d Barcodes

Windows driver supports one-dimensional barcode type as shown in the following table. Set the one-dimensional barcode type supported by the Windows driver in the “Barcode Font Name” field to print the bar code.

Barcode Font Name	Barcode Type	Size (Point)	Supported Characters
Barcode1	UPC-A	20/40/60/80	Numeric: 0~9
Barcode2	UPC-E	20/40/60/80	Numeric: 0~9
Barcode3	JAN13(EAN)	20/40/60/80	Numeric: 0~9
Barcode4	JAN8(EAN)	20/40/60/80	Numeric: 0~9
Barcode5	Code39	20/40/60/80	Numeric: 0~9 Symbols: \$, +, -, ., / Letters: A~Z
Barcode6	ITF	20/40/60/80	Numeric: 0~9
Barcode7	Codabar	20/40/60/80	Numeric : 0~9 Symbols: \$, +, -, ., /, : Letters: A~D
Barcode8	Code93	20/40/60/80	ASCII CODE: 0~127
Barcode9	Code128	20/40/60/80	ASCII CODE: 0~127

Detailed settings for one-dimensional barcode

Select “Barcode Font Name” and “Barcode Type” of one-dimensional barcode and click the “Properties” button.



This width, height, and HRI (Human Readable Interpretation), print position, and HRI Font of the bar code can be programmed from this window.

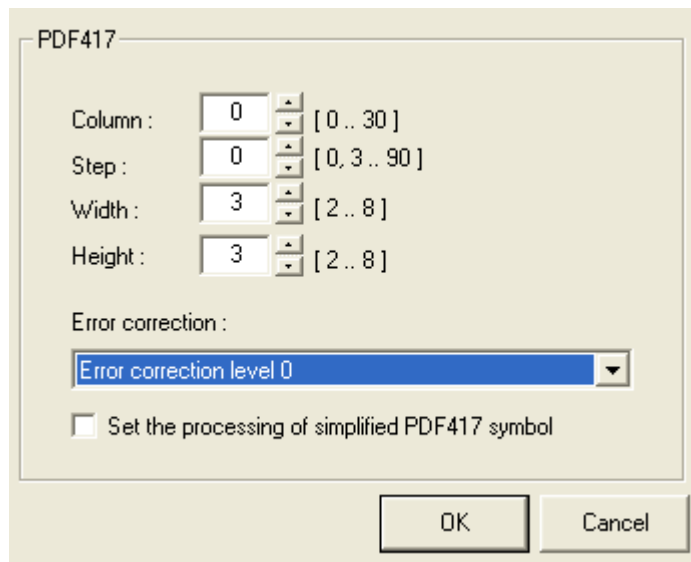
5-4-2 2d Barcodes

Windows driver supports two-dimensional barcode type as shown in the following table. Set the two-dimensional barcode type supported by the Windows driver in the “Barcode Font Name” field to print the barcode.

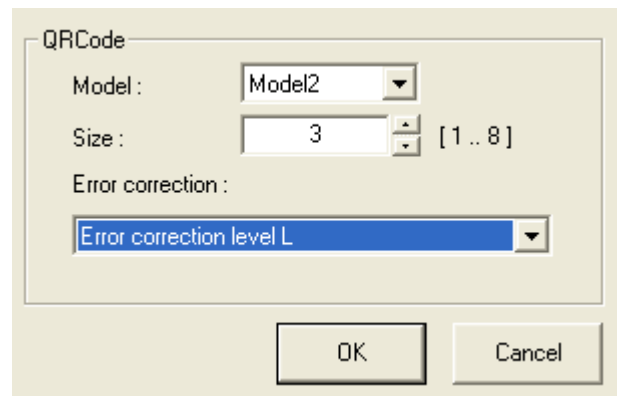
Barcode Font Name	Barcode Type	Size (Point)
2D-Code1	PDF417	9.5
2D-Code2	QR Code	9.5

Detailed settings for two-dimensional barcode

Select “Barcode Font Name” and “Barcode Type” of one-dimensional barcode and click the “Properties” button. Various options such as width, height, size, and error compensation level can be configured depending on the type of two-dimensional barcode from this window as shown in the following picture.



<PDF417>



<QR Code>

5-5 Cut / Cash Drawer

- 1) Open the Printer Properties window for the corresponding OS.
- 2) In the **General** tab, click **Preferences**.
- 3) Click the **Cut / Cash Drawer**.

Various functions including Open Cash Drawer, Internal Beep, Line Feeds and Paper-Cut can be inserted at the beginning or end of the document from this tab.

Cut: Paper can be cut at the end of each page or each document.

- | | | |
|--------------------------------------|---|---|
| Page/Job : No Cut / No Cut | : | Paper is not cut after printing. |
| Page/Job : No Cut / Partial Cut | : | Paper is cut at the end of each document (Job). |
| Page/Job : Partial Cut / Partial Cut | : | Paper is cut at the end of each page. |

Line feed: It is possible to set the number of line feeds between 0 and 99 for adding blank lines at the end of printing.

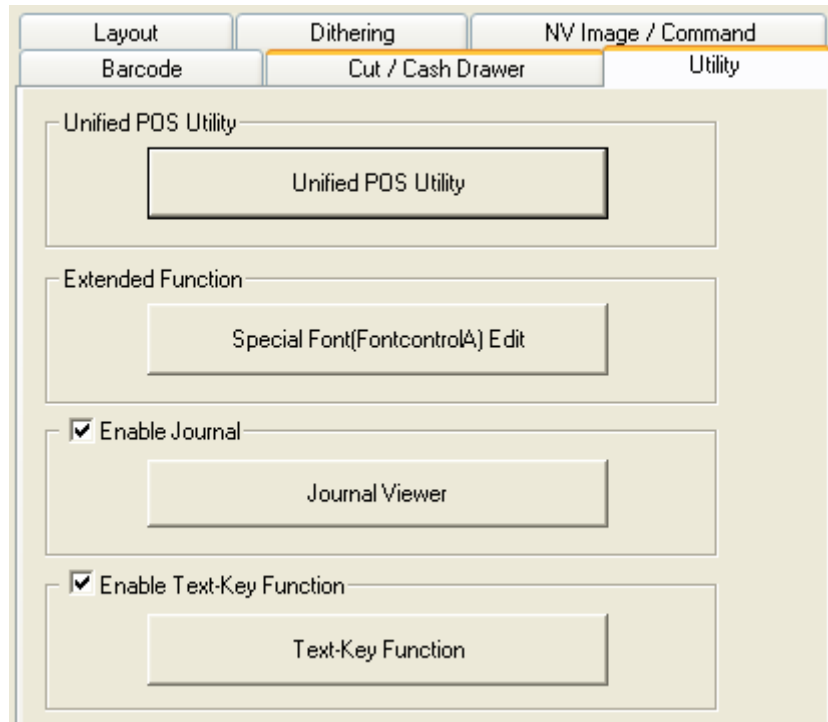
Cash Drawer:

- To open a cash-drawer at the start time of the printing procedure, tick **Open before printing #1** or **Open before printing #2** under **Begin Job** label.
- To open a cash-drawer at the start time of the printing procedure, tick **Open before printing #1** or **Open before printing #2** under **End Job** label.

Internal Beep:

- To make a beep sound at the start time of the printing procedure, tick **Internal Beep** under **Begin Job** label.
- To make a beep sound at the end time of the printing procedure, tick **Internal Beep** under **End Job** label.

5-6 Utility



- 1) Open the Printer Properties window for the corresponding OS.
- 2) In the **General** tab, click **Preferences**.
- 3) Click the **Utility**.

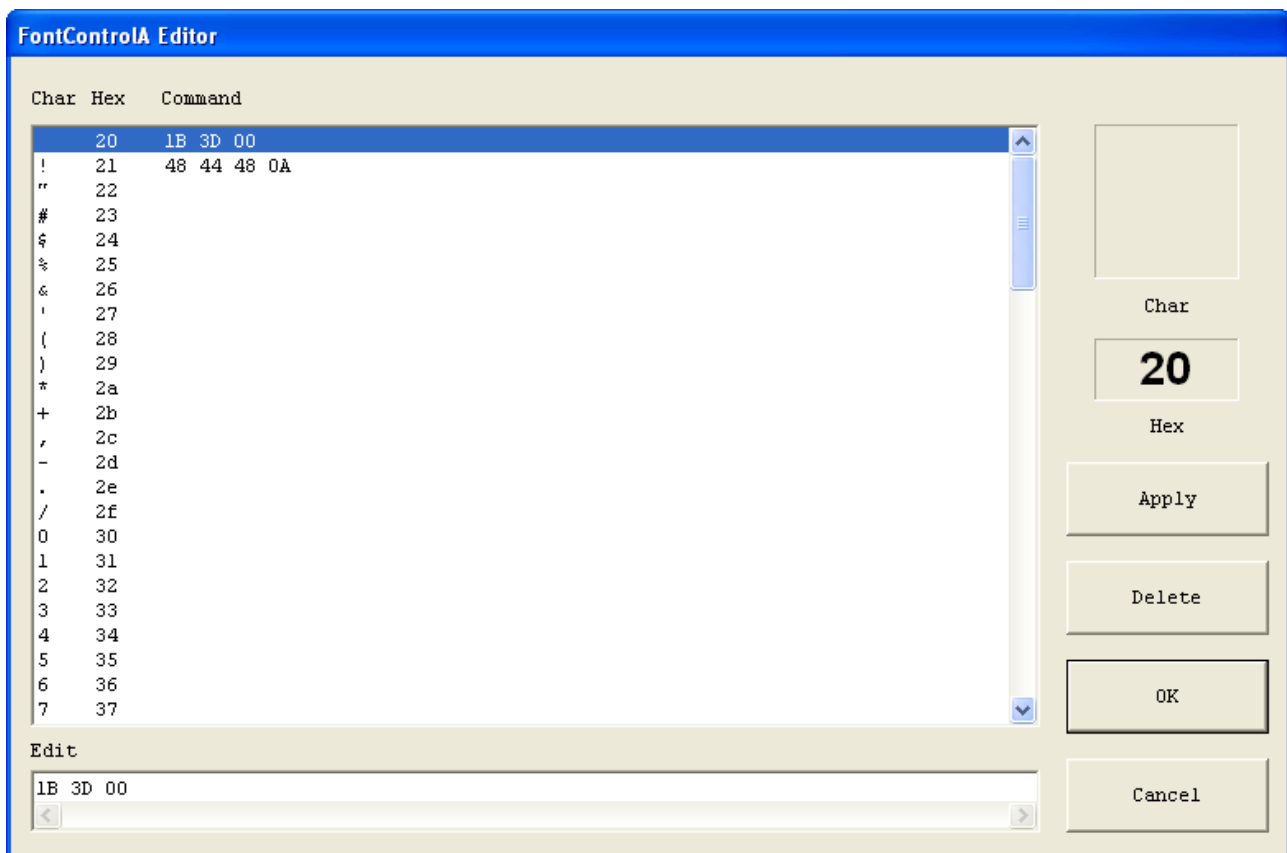
5-6-1 Unified POS Utility

Refer to the Unified POS Utility manual contained in the CD for details.

5-6-2 Special Font Edit Utility

The purpose of the “**FontControlA**” font is not for text printing. It is used to define the printer command, assign the defined printer command to a specific ASCII character, and send it to the printer. The range of ASCII code that the command can be assigned is from 0x20 to 0x7F, and the command can be easily assigned using this utility.

- 1) Click **Special Font Edit Utility**.
- 2) Select an ASCII code character and enter the printer command. All values should be entered in hexadecimal number format.
- 3) Click **Apply**, and then click **OK**.

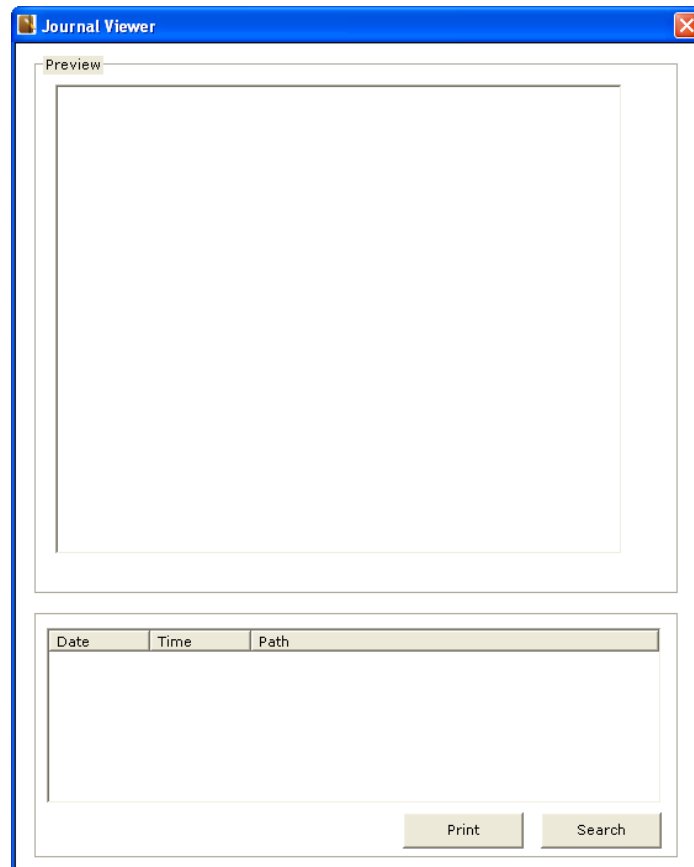


5-6-3 Journal Viewer

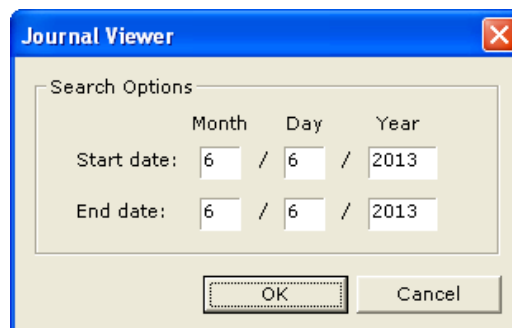
Journal is a function to save a copy of printed receipts. Copies can be saved without using journal printer with this function. Journal saves each printed document in a file and the saved file can be viewed by print and search data using this utility.

1) Tick **Enable Journal** and then click **Journal Viewer**.

2) The following window appears.



3) Click **Search**, and set **start date** and **end date** for searching all files created within a specific date range.



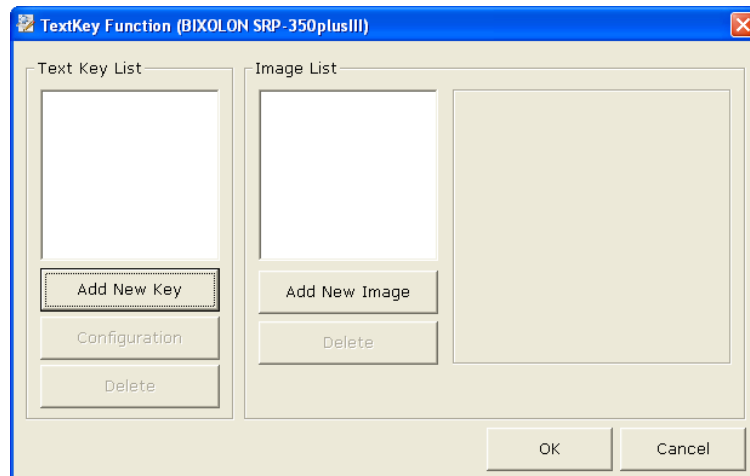
4) Select a file name from the list, and click **Print** to print the data stored in the file.

5-6-4 Text-Key Function

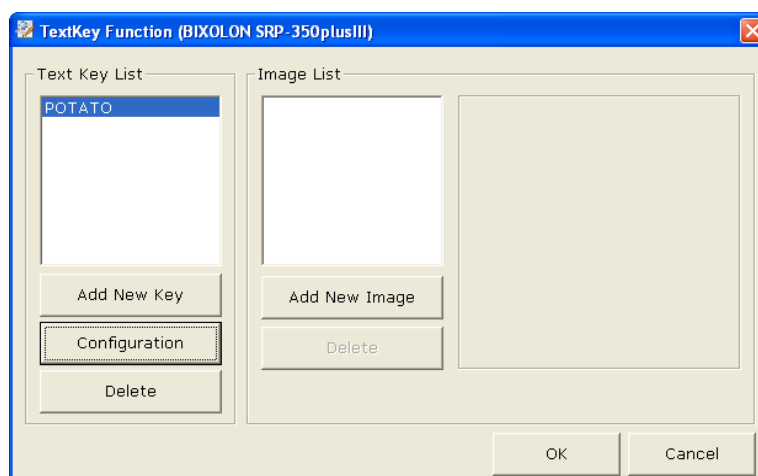
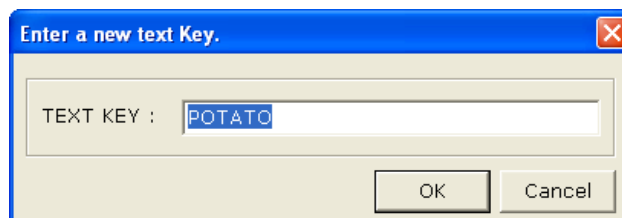
Text-Key Function is a utility to replace specific text (Text-Key) with other texts or graphic images, and to add images to the bottom of receipts. This function can be used only when using device fonts. It has no effect when using TTF fonts (True Type Fonts) or the data for Text-Key does not exist on a Print-Job.

► How to replace Text-Key with other texts.

1) Tick **Enable Text-Key Function** and then click **Text-Key Function**.

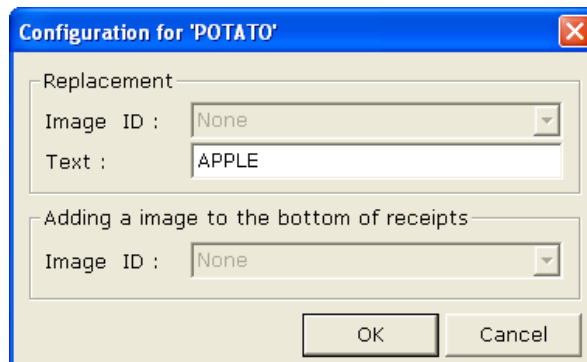


2) Click **Add New Key**, type a text to be used as Text-Key, and then click **OK**.



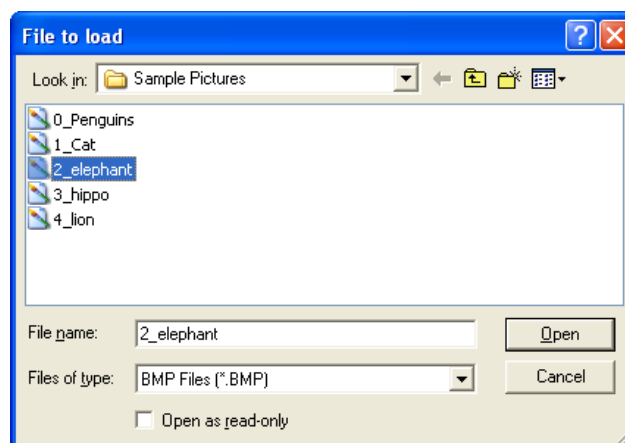
3) If the Text-Key is selected, The **Configuration** button is enabled.

- 4) Click **Configuration** to enter a text, which is used to replace the selected Text-Key with the text entered. For example, if you enter “**APPLE**” in the text box as below, the Text-key, “**POTATO**” can be replaced with “**APPLE**”.

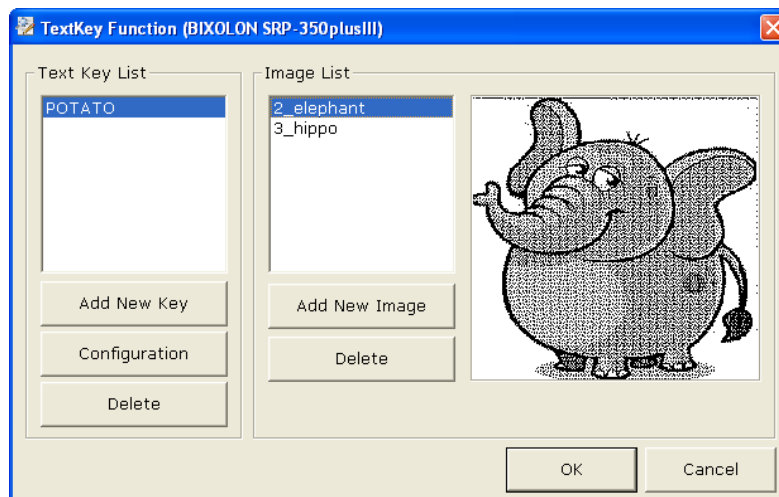
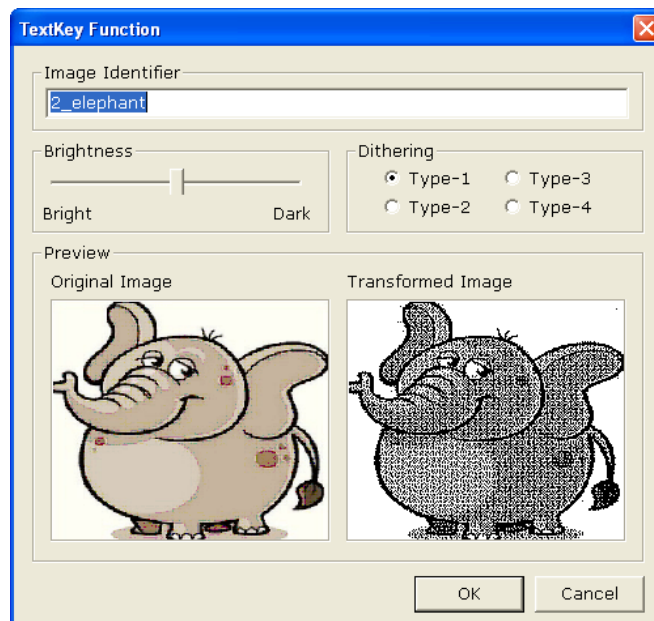


► How to replace Text-Key with a graphic image and to add it to the bottom of receipts.

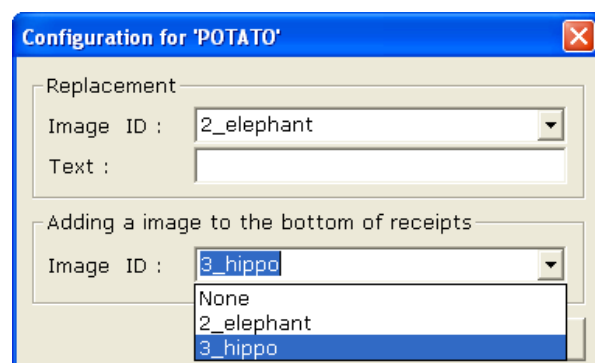
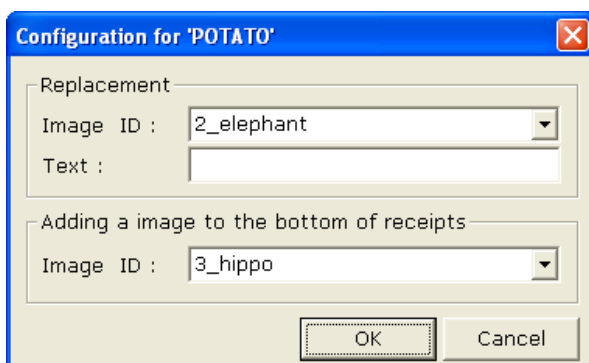
- 1) This utility can also replace the selected Text-Key with a graphic image instead of texts and can add a graphic image to the bottom of receipts. It is necessary to add images to the image list.
- 2) Click **Add New Image** to browse for an image to add to the list.



- 3) Enter a unique name to be added, adjust the brightness, select a dithering type, and then click **OK**. Repeat 2 to 3 step to add up to as much as you want.



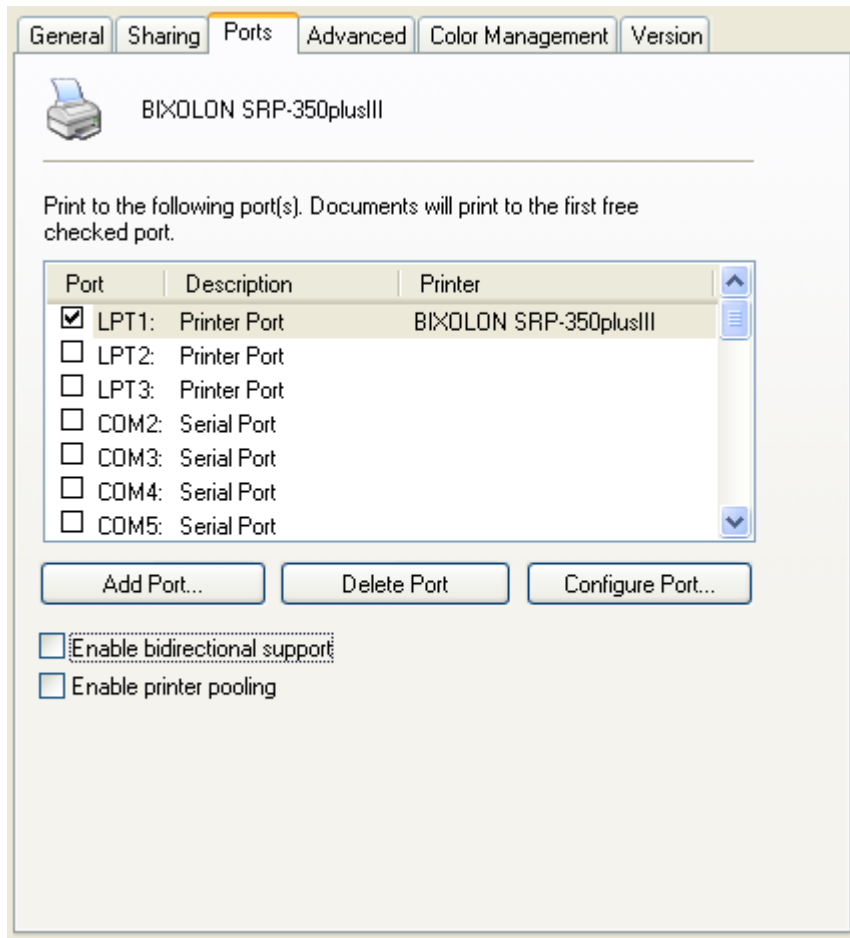
4) Select a Text-Key in the Text-Key list, and then click **Configuration**.



5) To replace the selected Text-Key with a graphic image, select one of the available identifier via the combo box under “**Replacement**” label. There are two replacement functions but only one of the two is available.

6) In order to print a graphic image to the bottom of receipts, select one of the available identifier via the combo box under “**Adding a image to the bottom of receipts**” label. The graphic image for the selected identifier only will be printed if the data for the selected Text-Key were found on a Print-Job.

5-7 Bidirectional Communication



- 1) Open the Printer Properties window for the corresponding OS.
- 2) Click **Ports** tab.

Because “**bidirectional support**” is disabled by default, it is necessary to tick **Enable bidirectional support** to get status from the printer. Sample codes contained in the CD can help you get more status information than the status information that OS supplies as standard way. This windows driver supports only one-on-one communication between the printer and host (typically a PC).

Printer status available to check:

- COVER OPEN/CLOSE
- PAPER EMPTY
- NEAR END PAPER
- CASH DRAWER OPEN/CLOSE

6. Windows Driver Specifications

6-1 Fonts

This Windows driver supports various fonts in the following table. Printing using these fonts is faster than using Windows fonts provided by the operating system.

6-1-1 Standard Fonts

Printer font			Font Size (dot)	Font Size (point)
FontA1x1	FontA1x1[Ext.]	FontA1x1[255]	12 x 24	9.5
FontA1x2	FontA1x2[Ext.]	FontA1x2[255]	12 x 48	19
FontA2x1	FontA2x1[Ext.]	FontA2x1[255]	24 x 24	9.5
FontA2x2	FontA2x2[Ext.]	FontA2x2[255]	24 x 48	19
FontA2x4	FontA2x4[Ext.]	FontA2x4[255]	24 x 96	38.5
FontA4x2	FontA4x2[Ext.]	FontA4x2[255]	48 x 48	19
FontA4x4	FontA4x4[Ext.]	FontA4x4[255]	48 x 96	38.5
FontA4x8	FontA4x8[Ext.]	FontA4x8[255]	48 x 192	77
FontA8x4	FontA8x4[Ext.]	FontA8x4[255]	96 x 96	38.5
FontA8x8	FontA8x8[Ext.]	FontA8x8[255]	96 x 192	77
FontB1x1	FontB1x1[Ext.]	FontB1x1[255]	9 x 17	7
FontB1x2	FontB1x2[Ext.]	FontB1x2[255]	9 x 34	13.5
FontB2x1	FontB2x1[Ext.]	FontB2x1[255]	18 x 17	7
FontB2x2	FontB2x2[Ext.]	FontB2x2[255]	18 x 34	13.5
FontB2x4	FontB2x4[Ext.]	FontB2x4[255]	18 x 68	27
FontB4x2	FontB4x2[Ext.]	FontB4x2[255]	36 x 34	13.5
FontB4x4	FontB4x4[Ext.]	FontB4x4[255]	36 x 68	27
FontB4x8	FontB4x8[Ext.]	FontB4x8[255]	36 x 136	54.5
FontB8x4	FontB8x4[Ext.]	FontB8x4[255]	72 x 68	27
FontB8x8	FontB8x8[Ext.]	FontB8x8[255]	72 x 136	54.5
FontC1x1	FontC1x1 [Ext.]	FontC1x1 [255]	9 x 24	9.5
FontC1x2	FontC1x2 [Ext.]	FontC1x2 [255]	9 x 48	19
FontC2x1	FontC2x1 [Ext.]	FontC2x1 [255]	18 x 24	9.5
FontC2x2	FontC2x2 [Ext.]	FontC2x2 [255]	18 x 48	19
FontC2x4	FontC2x4 [Ext.]	FontC2x4 [255]	18 x 96	38.5
FontC4x2	FontC4x2 [Ext.]	FontC4x2 [255]	36 x 48	19
FontC4x4	FontC4x4 [Ext.]	FontC4x4 [255]	36 x 96	38.5
FontC4x8	FontC4x8 [Ext.]	FontC4x8 [255]	36 x 192	77
FontC8x4	FontC8x4 [Ext.]	FontC8x4 [255]	72 x 96	38.5
FontC8x8	FontC8x8 [Ext.]	FontC8x8 [255]	72 x 192	77

6-1-2 Meaning of names of Device fonts.

1) FontA1x2

- ANSI Character code support (Code page 16: 1252)
- Font size (dot): 12 x 48 (Double height)
- Point size: 19

2) FontA1x2 [Ext]

- IBM expansion Character code support (Code page 0: 437)
- Font size (dot): 12 x 48 (Double height)
- Point size: 19

3) FontA1x2 [255]

- BUYER ONLY code support (Code page 255)
- Font size (dot): 12 x 48 (Double height)
- Point size: 19

6-2 “FontControl” Font

This Windows driver supports the special functions as shown in the following table. Select the “FontControl” character first and use the characters in the table to use the special functions. Take care as this function is not for printing general texts.

Character	Special Functions
5	Print HT (0 x 09)
6	Print LF (0 x 0A)
7	Print CR (0 x 0D)
a	Open Drawer 2 (50ms driver pulse width)
b	Open Drawer 2 (100ms driver pulse width)
c	Open Drawer 2 (150ms driver pulse width)
d	Open Drawer 2 (200ms driver pulse width)
e	Open Drawer 2 (250ms driver pulse width)
f	Open Drawer 2 without paper feeding (50ms driver pulse width)
g	Cut without paper feeding
i	Prints the NV Image saved in the 00 address (double-size)
j	Prints the NV Image saved in the 01 address (double-size)
k	Prints the NV Image saved in the 02 address (double-size)
l	Prints the NV Image saved in the 03 address (double-size)
m	Prints the NV Image saved in the 04 address (double-size)
p	Do not add HRI characters to barcode
q	Add HRI characters above the bard code with Font A
r	Add HRI characters below the bard code with Font A
s	Add HRI characters above the bard code with Font B
t	Add HRI characters below the bard code with Font B
u	Turns white/black reverse printing mode on
v	Turns white/black reverse printing mode off
w	Align text to the left
x	Align text to the center
y	Align text to the right
A	Open Drawer 1 (50ms driver pulse width)
B	Open Drawer 1 (100ms driver pulse width)
C	Open Drawer 1 (150ms driver pulse width)
D	Open Drawer 1 (200ms driver pulse width)
E	Open Drawer 1 (250ms driver pulse width)
F	Open Drawer 1 without paper feeding (50ms driver pulse width)
G	Prints the NV bitmap image 1
H	Prints the NV bitmap image 2
I	Prints the NV bitmap image 3
J	Prints the NV bitmap image 4
K	Prints the NV bitmap image 5
P	Cut (partial cut)
R	Prints the NV Image saved in the 00 address
S	Prints the NV Image saved in the 01 address
T	Prints the NV Image saved in the 02 address
U	Prints the NV Image saved in the 03 address
V	Prints the NV Image saved in the 04 address
[Prints the NV bitmap image 1 (double-size)
]	Prints the NV bitmap image 2 (double-size)
^	Prints the NV bitmap image 3 (double-size)
_	Prints the NV bitmap image 4 (double-size)
`	Prints the NV bitmap image 5 (double-size)

1) Example : Select “FontControl” font and send 6 for “LF” (Line Feed) operation (instead of printing character “6”).

2) “FontControl” character function

Printer font special function	Function	Point size (point/dot)
FontControl	Open Drawer 1 /2 Cut receipt Cut receipt (without paper feeding) Align (left/center/right) Print HT, LF, CR Print barcode Print NV bitmap image	(9.5 / 12x24)

7. Windows Driver Application

7-1 Application with Visual Basic

This section contains example codes to control the printer using Windows driver with Visual Basic. Sample codes contained in the CD.

7-1-1 Windows driver selection

The following code is an example of the selection of the BIXOLON SRP-350plusIII Windows Driver.

```
For Each prnPrinter In Printers
    If prnPrinter.DeviceName = "BIXOLON SRP-350plusIII" Then
        Set Printer = prnPrinter
        Exit For
    End If
Next
```

7-1-2 Text Printing

The following example code explains how to print texts using Windows Fonts and Device Fonts.

```
'Print in Windows font
Printer.FontSize = 9
Printer.FontName = "Arial"
Printer.Print "Arial Test"

'Print in printer font
Printer.FontSize = 9.5
Printer.FontName = "FontA1x1"
Printer.Print "FontA1x1 Test"

Printer.EndDoc
```

7-1-3 Barcode Printing

The following example code explains how to print the barcode (JAN8 (EAN)).

```
'Print Bar Code.  
Printer.FontSize = 20  
  
Printer.FontName = "Barcode4"  
Printer.Print "1234567"  
  
Printer.EndDoc
```

The following example code explains how to print the 2-D barcode (PDF417).

```
'Print Two-dimensional Codes.  
Printer.FontSize = 9.5  
  
Printer.FontName = "2D-Code1"  
Printer.Print "Print Test PDF417"  
  
Printer.EndDoc
```

7-2 Application with WordPad

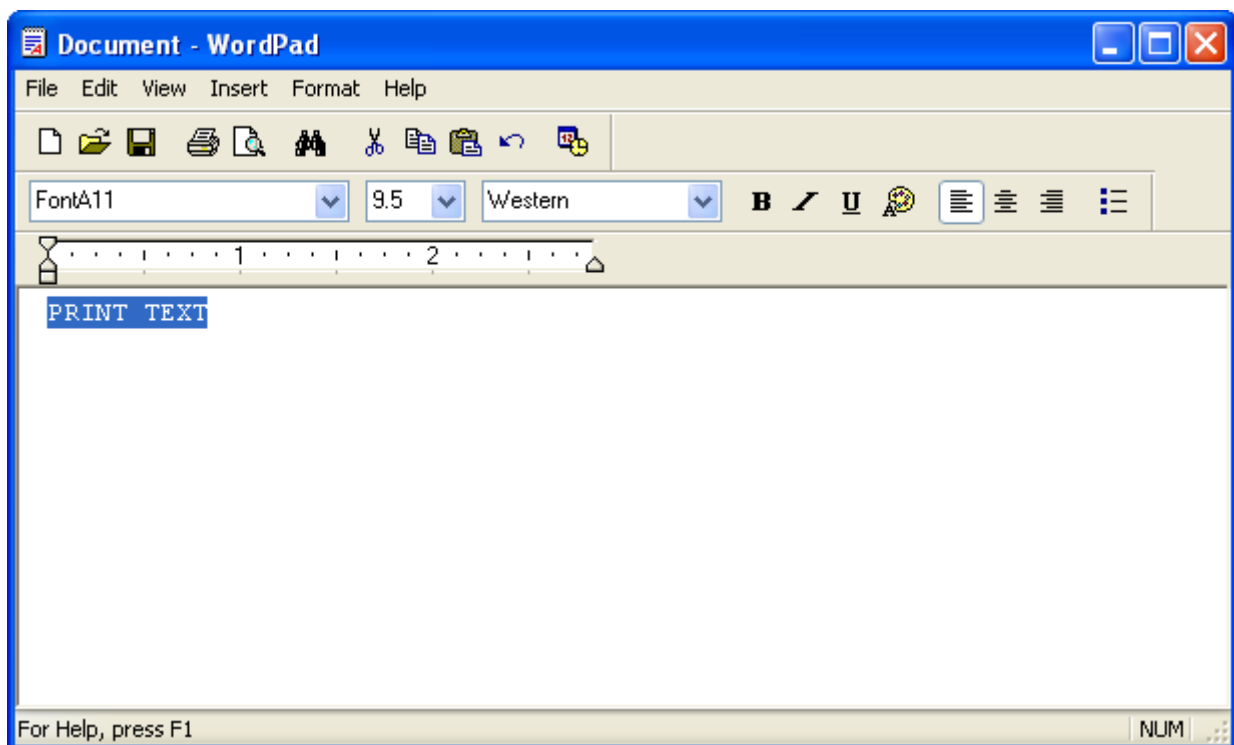
7-2-1 WordPad environment setting

After running WordPad and setting the following conditions, conduct a test.

- Select Printer
After selecting “Print” from the “File” tab, select the printer (BIXOLON SRP-350plusIII).
- Select Paper Size, Orientation, and Margins
After selecting “Page Settings” from the “File” tab, select the paper size, orientation, and margins.

7-2-2 Text Printing

Use the Windows Driver of the printer to run a test.



- 1) Select the desired font from the Font menu (FontA1x1).
- 2) Select the desired font size (9.5).
- 3) Enter the text to be printed in WordPad.
- 4) Click the **Print** button in the toolbar to print.